



**OPEN  
HOUSE**

**SUNSHINE COAST**

**22 & 23 OCTOBER 2022**

**CHILDREN'S PROGRAM**

## My Journey

A vertical orange line on the left side of the page serves as a margin. To its right, there are 20 horizontal blue lines, evenly spaced, providing a writing area for the 'My Journey' section.

## Welcome to the inaugural Sunshine Coast Open House Children's Program

### Presented by Inspirations Paint.

We hope you enjoy exploring some of the Sunshine Coast's most exciting buildings and structures and discover more about the wonderful region we live in.

This book is full of amazing sketches and puzzles by some of the Sunshine Coast's most creative architects, designers, and organisations.

Many of the architects, designers and companies who have created the sketches in this book have also helped to create the buildings and structures that you see in and around the Sunshine Coast.

In this book you will find lots of fun things to do, puzzles to complete, fun facts to remember, and pictures that you can add your own ideas to.

There is so much to see and explore at Sunshine Coast Open House...we hope you enjoy visiting some incredible buildings on Saturday 22 and Sunday 23 October 2022 and look forward to seeing you then!

Proudly Supported by



WHAT'S YOUR NEXT PROJECT?

# THE BIG PICTURE

Architects think about even the smallest of creatures in our community when designing buildings.

Get your inspiration from nature... colour in and create your own design.

## WIN....PAINT YOUR ROOM

Enter your colouring-in creation to win a paint pack valued at \$230 from Inspirations Paint and Porters Paints.

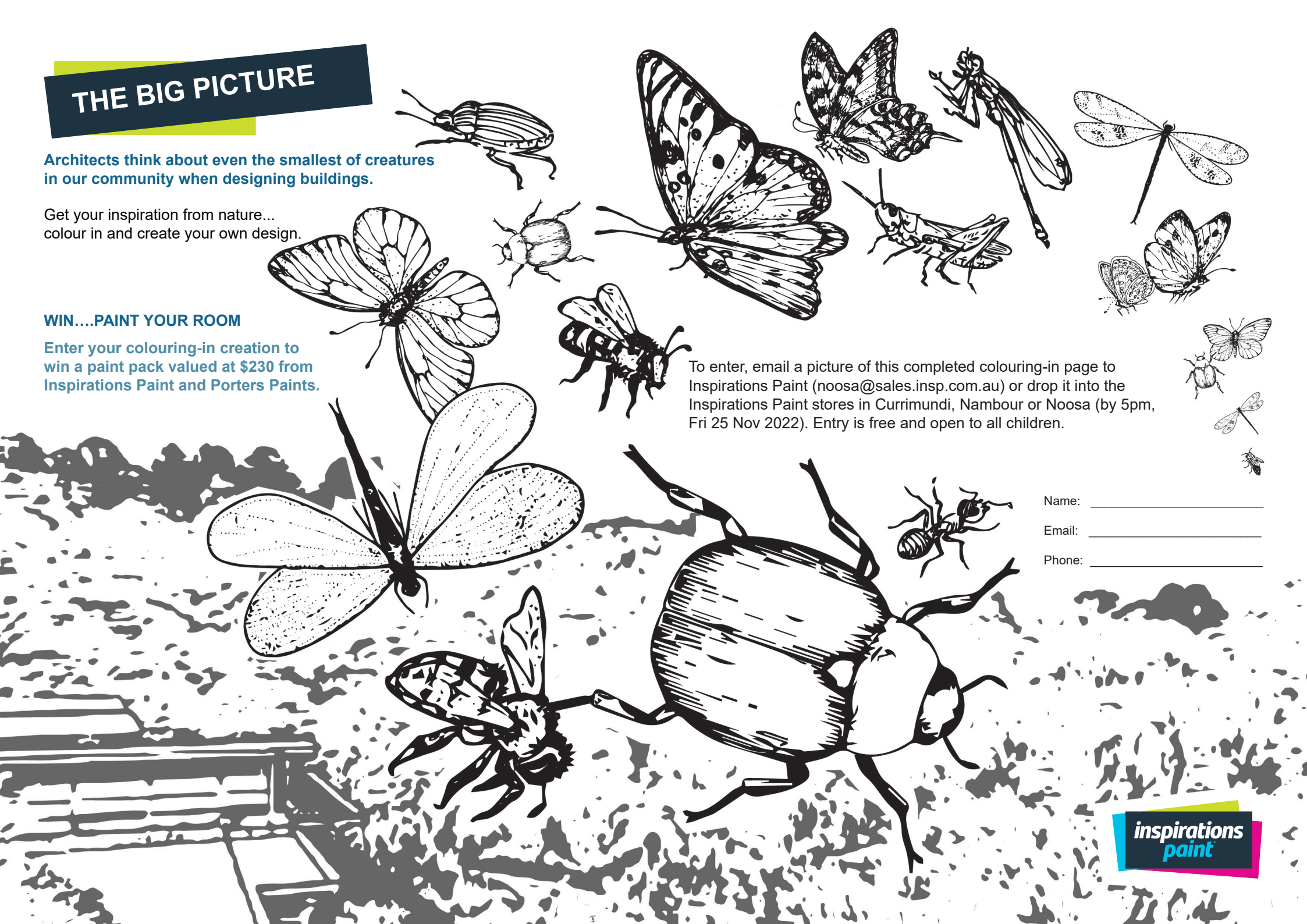
To enter, email a picture of this completed colouring-in page to Inspirations Paint ([noosa@sales.insp.com.au](mailto:noosa@sales.insp.com.au)) or drop it into the Inspirations Paint stores in Currimundi, Nambour or Noosa (by 5pm, Fri 25 Nov 2022). Entry is free and open to all children.

Name: \_\_\_\_\_

Email: \_\_\_\_\_

Phone: \_\_\_\_\_

**inspirations**  
paint







Bankfoot House  
Since 1868

## Coach and horses

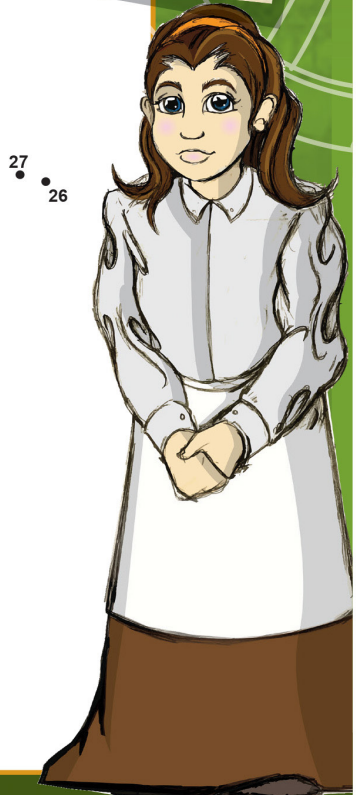
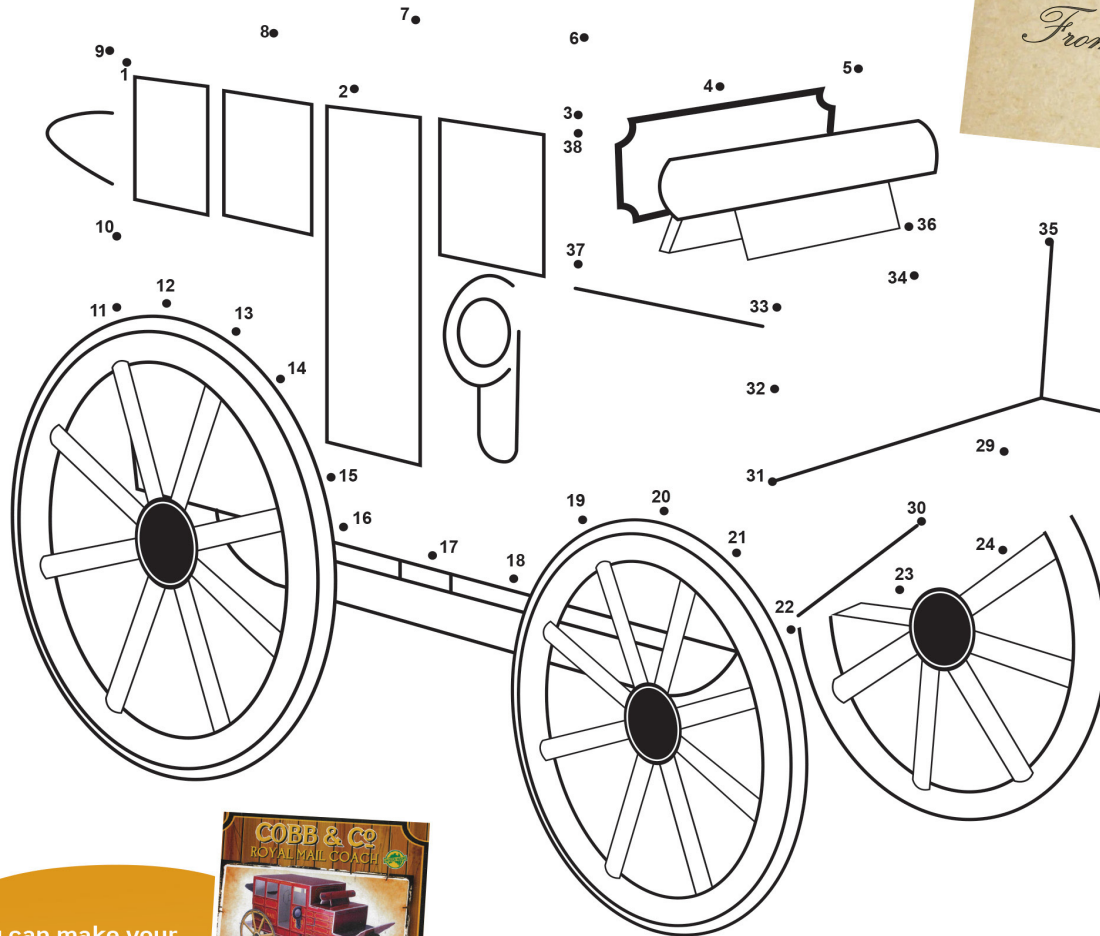


### Cobb & Co Coach

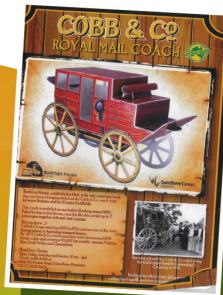
The first Cobb & Co Coach set out from Brisbane to the Gympie Gold Fields in 1868. To warn Bankfoot House of their arrival, the coach driver would sound the bugle so that lunch and new horses were ready.

Bankfoot House also provided a Post Office and accommodation.

Follow the numbers to reveal the Cobb & Co Coach and address your envelope.

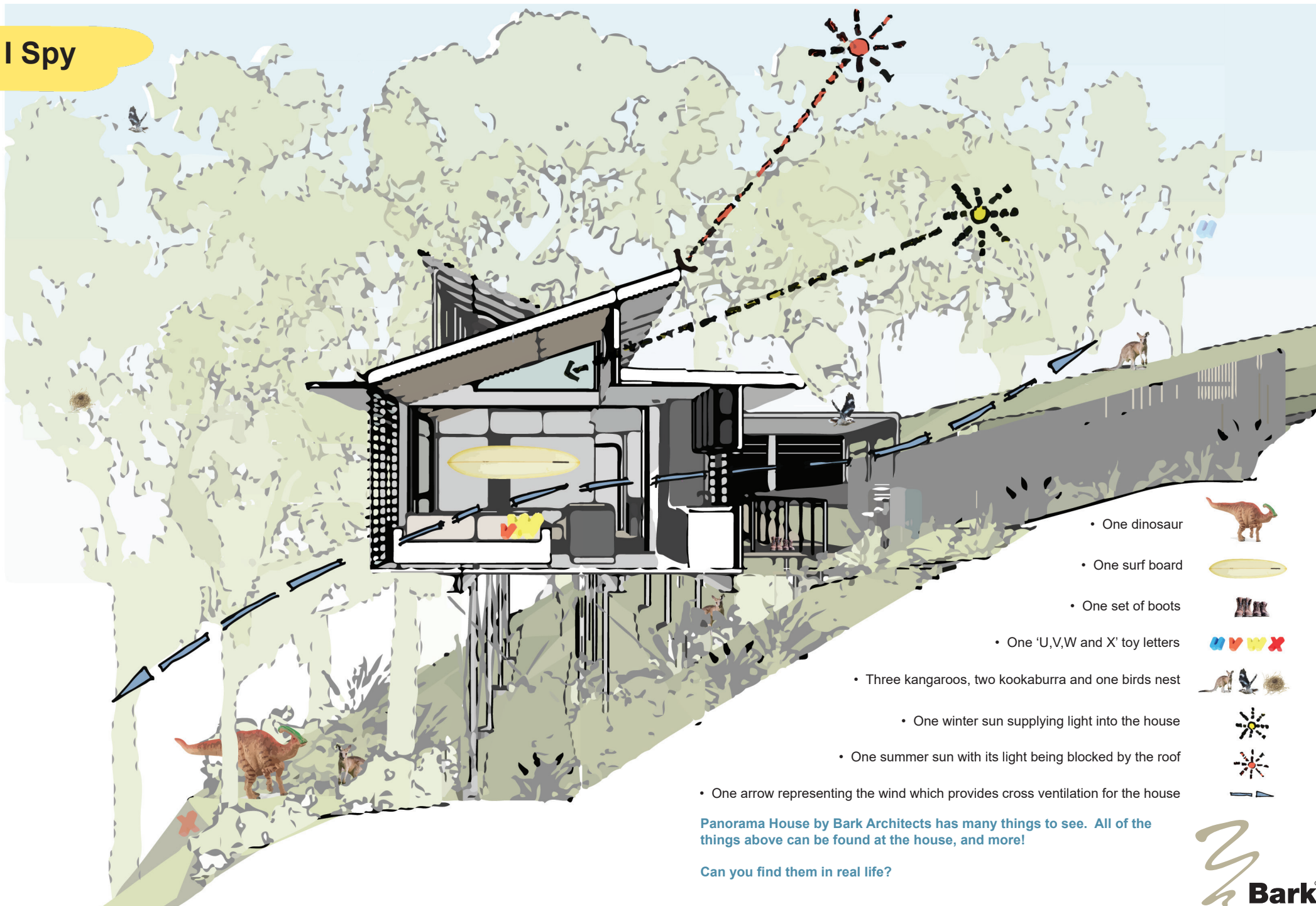


You can make your own 3D Cobb & Co Coach when you visit Bankfoot House Heritage Precinct.





# I Spy



• One dinosaur



• One surf board



• One set of boots



• One 'U,V,W and X' toy letters



• Three kangaroos, two kookaburra and one birds nest



• One winter sun supplying light into the house



• One summer sun with its light being blocked by the roof



• One arrow representing the wind which provides cross ventilation for the house



Panorama House by Bark Architects has many things to see. All of the things above can be found at the house, and more!

Can you find them in real life?





## PAPERBAG CITYSCAPE

### INSTRUCTIONS

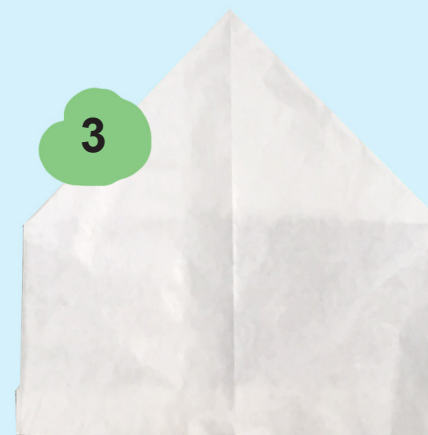
Create a stunning city from paper bags and a little imagination. This fun activity is one the whole family can get involved in. Your city can be as simple or as complex as you desire.

#### Materials you will need:

*Brown and / or white paper bags, permanent black marker pen, lead pencil, acrylic brushes and paints, colour pencils and scissors.*

#### Have fun!

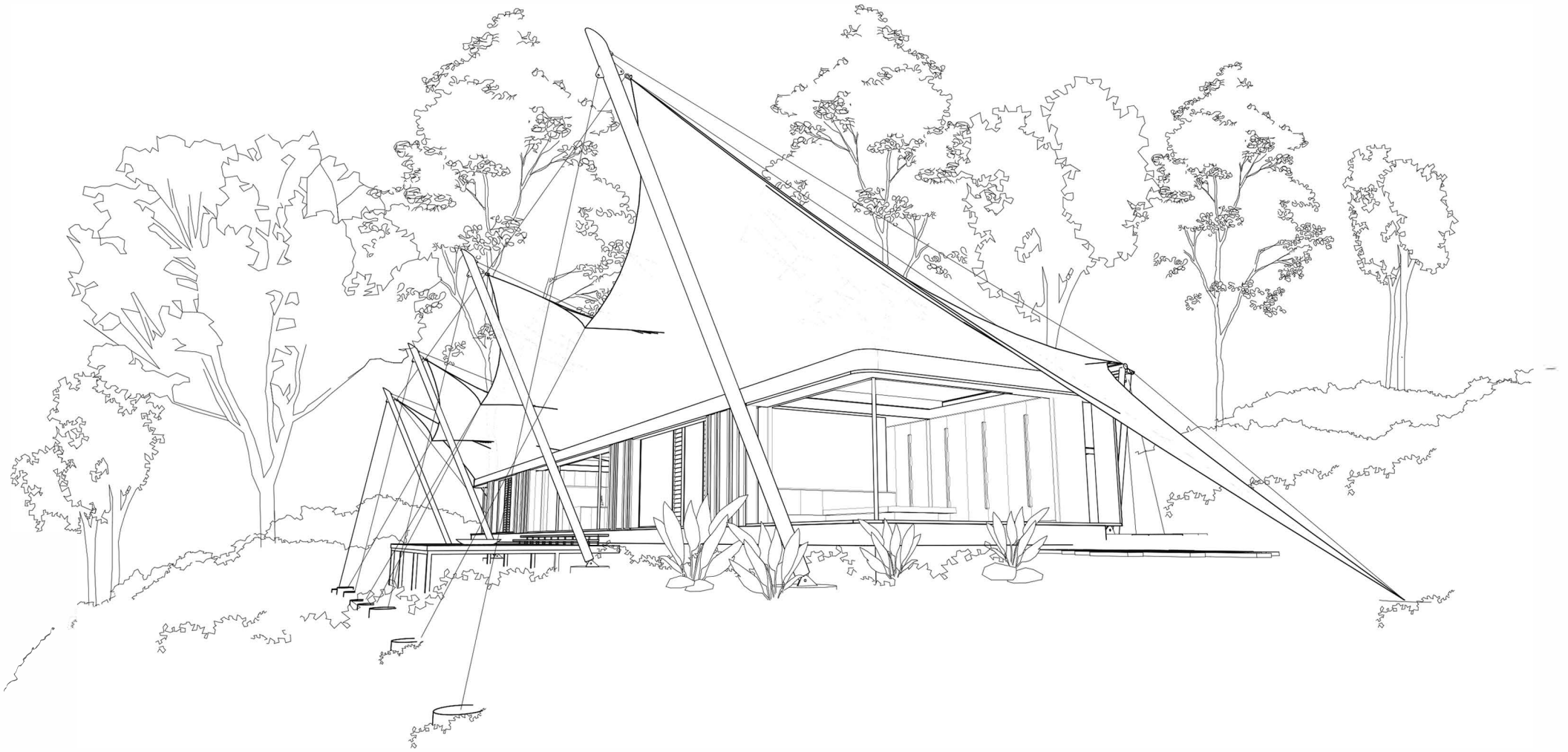
- Carefully trim the jagged-edge off the top of the brown and/or white paper bags.
- Gently fold each bag in half (from side to side) and make a gentle crease (Image 1).
- Fold both top edges towards the center crease line, and crease each side (Image 2).
- Carefully trim off the bottom edge of the bag.
- Fold corners back into place, then fold them inwards into the bag to make a pitched roof (Image 3).
- Now you are ready to design your fabulous cityscape by using the black marker and your choice of pencils or paints. Be as creative as you can!
- When you have finished designing and coloring in your buildings, arrange them into a small cityscape by opening the bottom of the bags so that they stand up by themselves (Image 4).





- People live in all types of homes! Here is a home on the Sunshine Coast that looks like a **tent**.

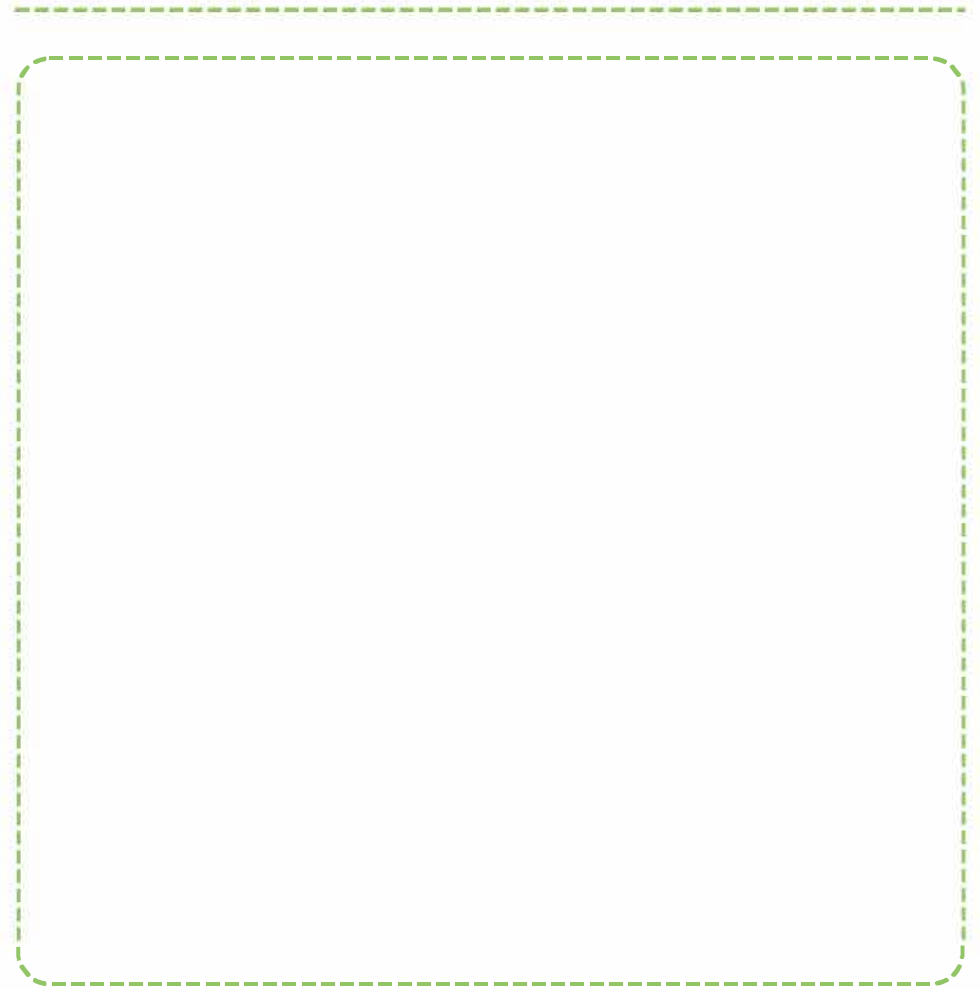
Would you like to colour it?



- If you were to design a house, what would you like it to look like?

Draw the **coolest house** you can imagine below!

- Where would this house be located?



- Can you make a list of the cool features you think the house needs to suit this location and its environment?



## DRAW A BUILDING THAT YOU VISITED TODAY....

JUST LIKE PEOPLE... BUILDINGS ARE DIFFERENT. THEY HAVE DIFFERENT FEATURES SUCH AS SHAPES, HEIGHTS, WINDOWS, VERANDAHS, ROOFS, COLOURS AND MATERIALS. DRAW YOUR FAVOURITE BUILDING (OR COPY THIS ONE) IF YOU DON'T HAVE TIME DURING YOUR VISIT, TAKE A PHOTO AND DRAW IT AT HOME.

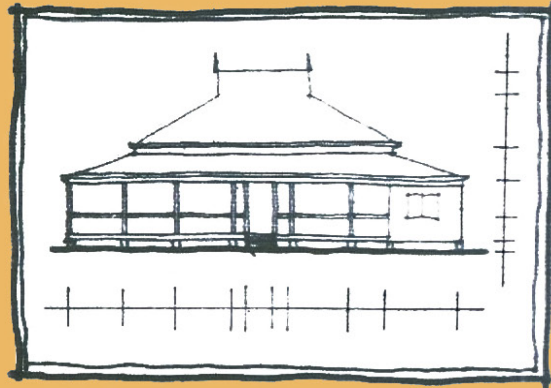
FIT YOUR DRAWING IN THE FRAME ON THE OPPOSITE PAGE, AND TURN IT TO SUIT A WIDE BUILDING LIKE A HOUSE OR A TALL BUILDING LIKE A LIGHTHOUSE.



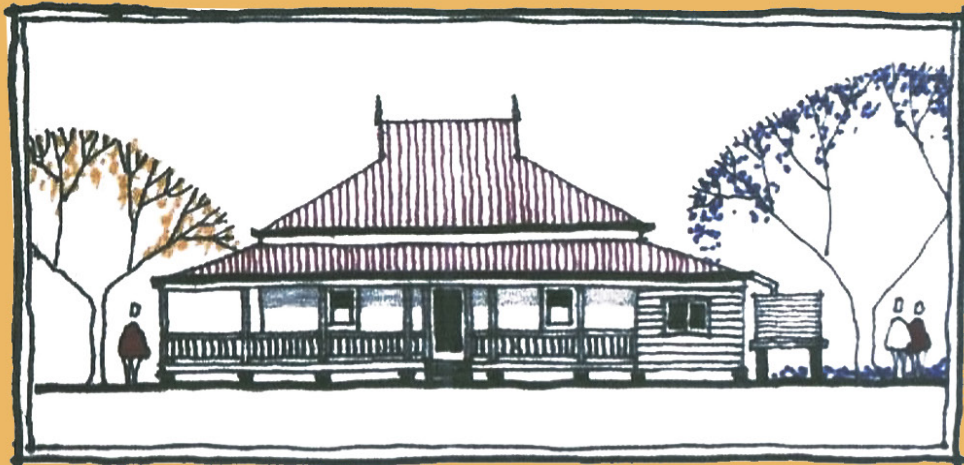
HORIZONTAL  
(LANDSCAPE)



VERTICAL  
(PORTRAIT)



START BY DRAWING THE MAIN PARTS LIGHTLY IN PENCIL TO GET THEM ALL IN THE CORRECT PROPORTIONS.



THEN ADD IN SPECIAL FEATURES AND DETAILS LIKE WINDOWS, DOORS AND BALUSTRADES.

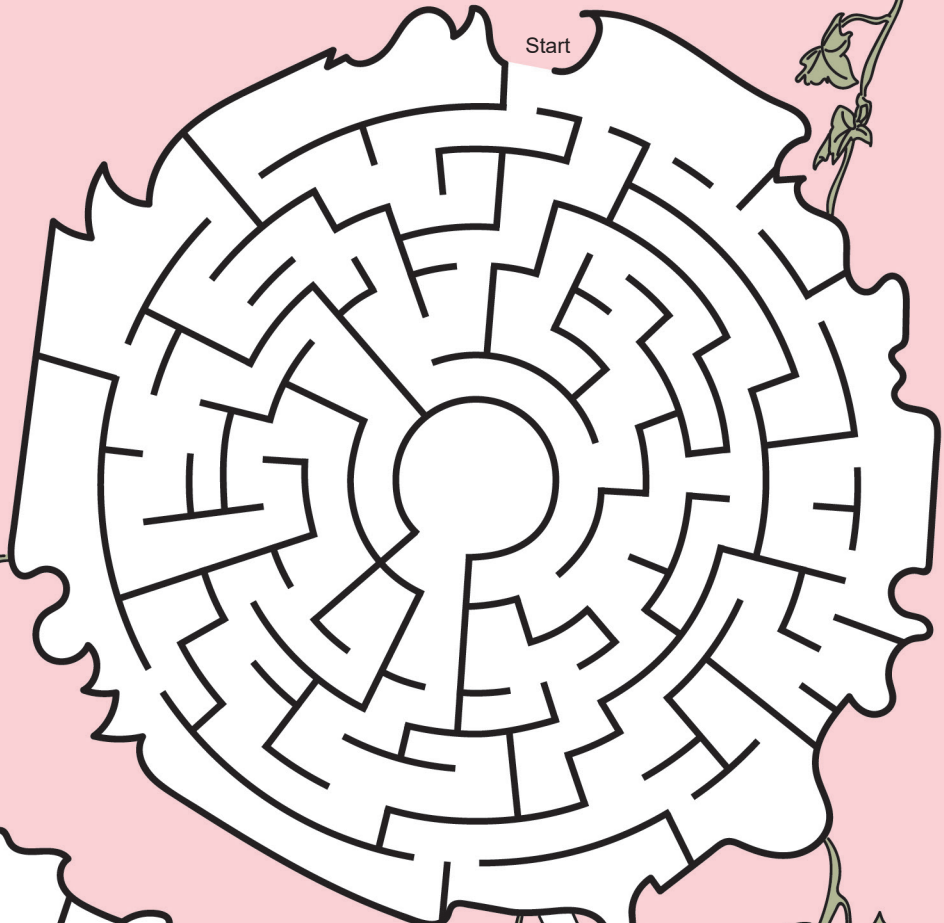
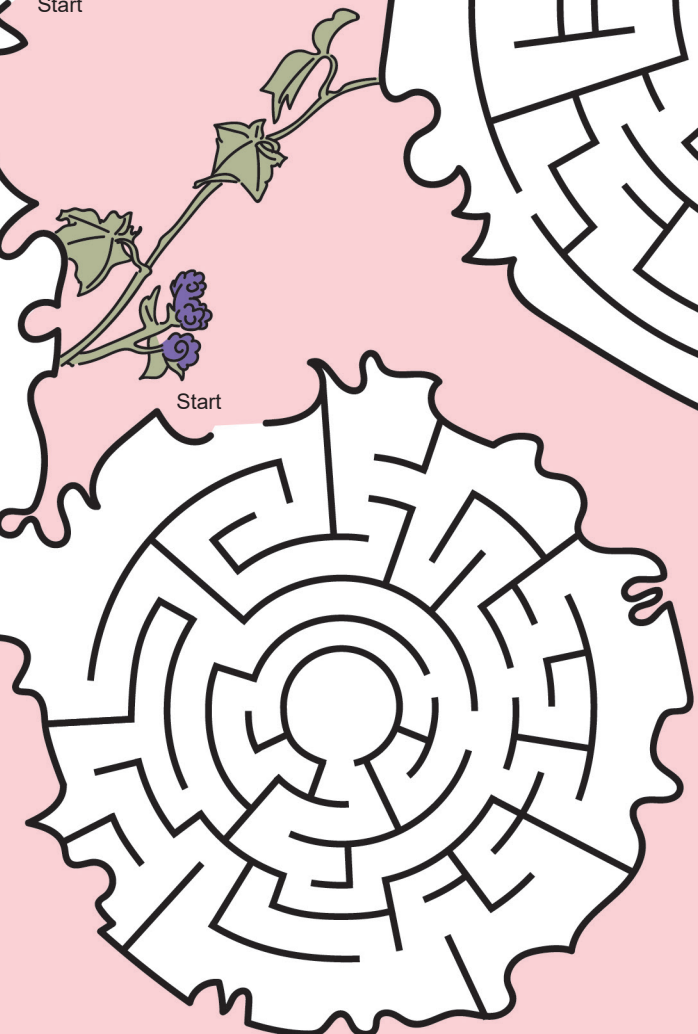
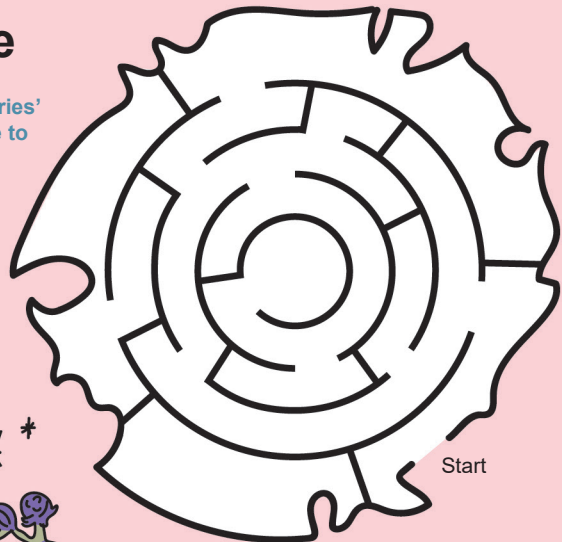
YOU CAN ALSO INCLUDE PEOPLE AND TREES.

LEAVE IT AS A BLACK AND WHITE SKETCH, OR USE COLOURED PENS OR PENCILS TO ADD TEXTURE, COLOUR AND SHADOWS.

**ENJOY DRAWING!**

# Fairy Circle

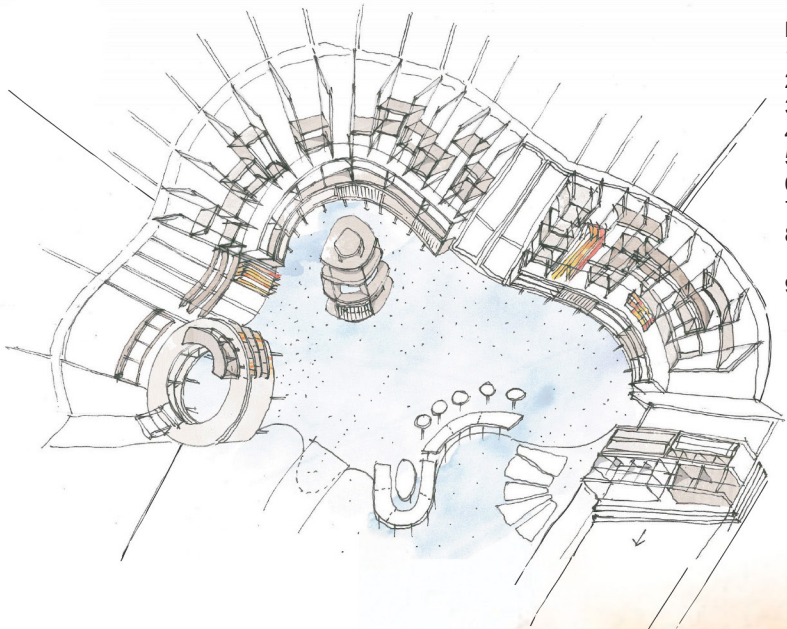
Do not get lost in the fairies' mazes! Get to the centre to solve the puzzle.



Did you know the Paperbark Pod House by Bark Architects was designed so it did not destroy a fairy circle?

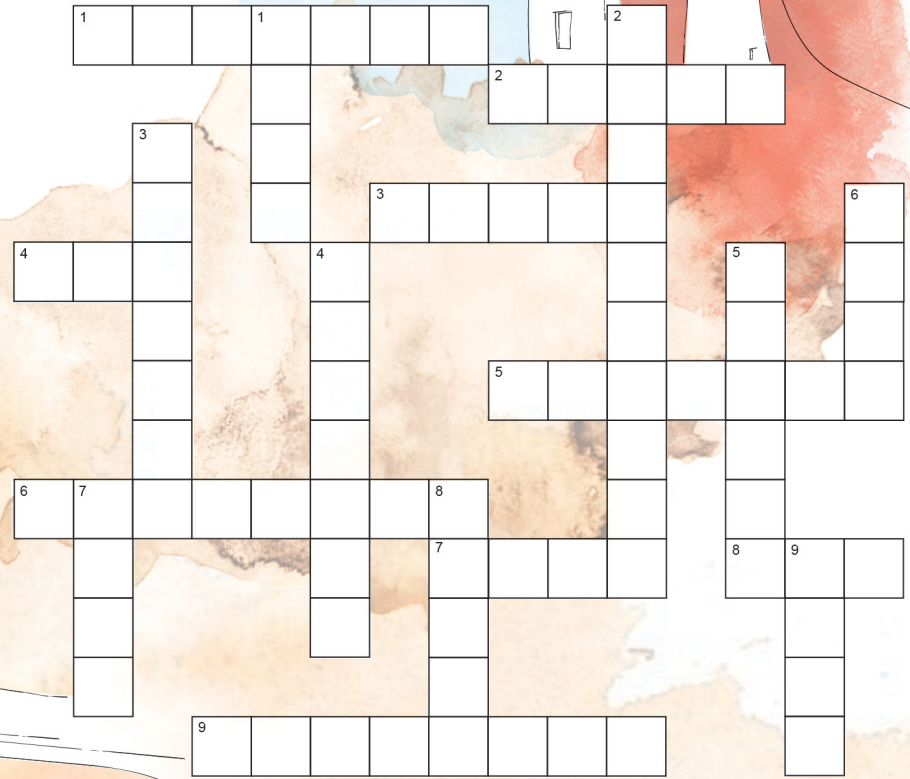
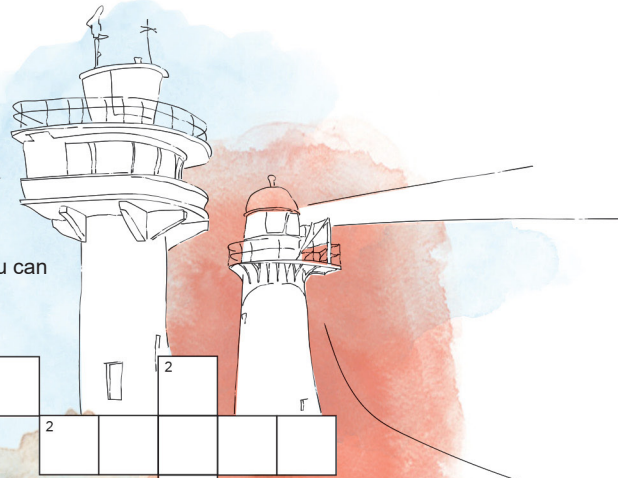
Can you find the fairy ring?





**DOWN**

1. This part of old buildings is often made of shingles?
2. Caloundra's oldest building?
3. Type of timber used in old houses?
4. Where would you find a Tram Terminus on the Sunshine Coast?
5. What type of houses were built at Alfredson's Joinery?
6. How many walls does your bedroom have?
7. Curved top to a door or window opening?
8. Sunshine Coast Open House offers several walking .... where you can learn about special places.
9. Which strong metal is often used in buildings?



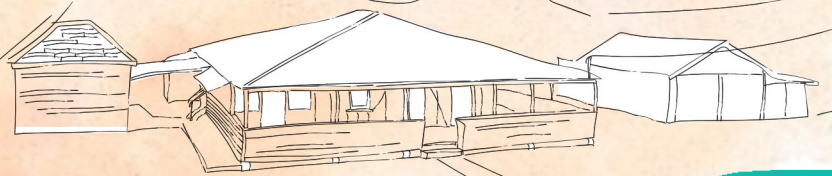
- ACROSS**
1. Library
  2. Noise
  3. Beech
  4. Art
  5. Pioneer
  6. Bankfoot
  7. Once
  8. Tin
  9. Majestic



**ACROSS**

1. Caloundra Art Gallery was once a .....?
2. Majestic Theatre Films are silent, but the organ makes some .....
3. Timber used in Fairview?
4. What is featured on the walls of the University of the Sunshine Coast Art Gallery?
5. Which Cottage is one of the oldest surviving residences in Buderim?
6. Which house was a Cobb & Co Coach Stop?
7. How many times has the Caloundra Lighthouse been moved from its original location?
8. Which strong metal is often used in buildings .....
9. Oldest silent film theatre in the world?

- DOWN**
1. Roof
  2. Lighthouse
  3. Plisawn
  4. Nambour
  5. Precut
  6. Four
  7. Arch
  8. Tours
  9. Iron





# SPOT THE DIFFERENCE

There are 10 to find!



List of differences:

1. \_\_\_\_\_
2. \_\_\_\_\_
3. \_\_\_\_\_
4. \_\_\_\_\_
5. \_\_\_\_\_
6. \_\_\_\_\_
7. \_\_\_\_\_
8. \_\_\_\_\_
9. \_\_\_\_\_
10. \_\_\_\_\_

Well done!



Wishlist Project



## Places to Visit

We hope you enjoy visiting some awesome buildings on Sunshine Coast Open House weekend - Saturday 22 & Sunday 23 October - and like learning more about the Sunshine Coast!



### Bankfoot House Heritage Precinct

1998 Old Gympie Road, Glass House Mountains

(Sat 22 & Sun 23 Oct, 10am to 3pm)

Bankfoot House was built in 1868 and is the oldest surviving residence in the Glass House Mountains. It was once a lunch stop and staging post for Cobb & Co coaches traveling between Brisbane and the Gympie goldfields.



### Landsborough Museum

4 Maleny Street, Landsborough

(Sat 22 & Sun 23 Oct, 10am to 3pm)

Once the Landsborough Shire Council Chambers office designed in 1924, the Landsborough Museum is today one of the region's largest community museums. The Museum is home to more than 14,000 historical objects which tell the story of the region and its people.



### Fairview

15 Porters Lane, Maleny

(Sat 22 Oct, 10am to 4pm)

Pop in and enjoy Devonshire tea at Pattemore House, also known as "Fairview". Built in 1907 by the Pattemore family, Fairview is one of the oldest farmhouses in the region and also one of the most elegant.



### Caloundra Regional Gallery

22 Omrah Avenue, Caloundra

(Sat 22 & Sun 23 Oct, 10am to 2pm)

Check out the Kids Art Trail at the Caloundra Regional Gallery. Especially designed for kids, the Art Trail will encourage you to explore the artworks, look for clues, solve puzzles and create your own artwork.



### Caloundra Lighthouses

3 Canberra Terrace, Kings Beach

(Sat 22 Oct, 10am to 4pm)

Take a step back in time and enjoy visiting a real lighthouse. Perched high on a ridge at Caloundra are TWO lighthouses – one built in 1896 and one built in 1968. Go inside, climb the stairs, and learn about how these important buildings and their keepers protected boats and sailors out at sea.

Children are especially welcome to pop in at 10.30am to enjoy a book reading

by local author John Bradley who will entertain the crowd with his book, *The Little Lighthouse* which was inspired by the history of the Caloundra Lighthouses. The book is beautifully illustrated by Sunshine Coast artist Diane Somers-Cook.



### Wishlist

1 Bright Place, Birtinya

(Sat 22 Oct, 9am to 4pm)

Visit this recently completed, state-of-the-art centre which provides hospital accommodation opposite the Sunshine Coast University Hospital to support patients and their families.



### University of the Sunshine Coast Art Gallery

University of the Sunshine Coast, 90 Sippy Downs Drive, Sippy Downs

(Sat 22 Oct, 10am to 4pm)

The University of the Sunshine Coast Art Gallery is one of the leading public galleries in the area. It is a space where art, ideas and community come together.





### Pioneer Cottage Buderim

5 Pioneer Crescent, Buderim  
(Sat 22 Oct, 10am to 3pm)

Can you imagine what the family home was like pre-electricity? Travel back in time and enjoy learning about life in the 1890s at Pioneer Cottage. Beautifully preserved and one of the oldest homes in the area, Pioneer Cottage features hundreds of historical items to study.



### Nambour Tram Terminus

28 Mill Street, Nambour  
(Sun 23 Oct, 10am to 3pm)

Check out the Nambour Tram Terminus which will soon be home to a unique Tram which will run along the old Cane Tramway, through the centre of town, to the Nambour Show Grounds. Learn more about the historical Nambour Tramway and view large scale rendered designs of the Tram.



### Eumundi School of Arts Hall

63 Memorial Drive, Eumundi  
(Sat 22 & Sun 23 Oct, 10am to 3pm)

The Eumundi School of Arts Hall was the hub of activity in Eumundi for decades. Today, it is still a central place for meetings, theatre, concerts, and other recreational activities. Check out this historical community facility.



### Eumundi Museum

73 Memorial Drive, Eumundi  
(Sat 22 & Sun 23 Oct, 10am to 3pm)

Housed in the old Methodist Church and built in 1911, Eumundi Museum has recently undergone a major renovation. Enjoy exploring the museum's displays and learning about the region's history and development.



### Majestic Theatre Pomona

3 Factory Street, Pomona  
(Sat 22 Oct, 9am to 4pm)

Imagine black and white films with no speaking. The Majestic Theatre at Pomona is the world's longest continuously operating silent film theatre. The charming theatre features one of only four 1937 Compton Organs with 750 bellowing pipes...it's so loud the floor vibrates!



### Pomona Railway Station Gallery

10 Station Street, Pomona  
(Sat 22 & Sun 23 Oct, 10am to 2pm)

Explore the old Pomona Railway Station Gallery which features several historical buildings including an Information Room, Signal Room, Station Master Room, Banana Shed, Carriage Exhibition Room and Blacksmith Shed for resident artists.



### Saltair Modular Factory Experience and Tour

41 Quanda Road, Coolum Beach  
(Sat 22 & Sun 23 Oct, 9am to 4pm)

The Saltair team invites you and your parents on a full factory tour of its modular building facility. Enjoy seeing a number of sustainable and contemporary buildings in various stages of construction.

We hope you have fun visiting some awesome buildings and learning more about the Sunshine Coast. See you in 2023!

A big thank you to the Sunshine Coast Open House Children's Program contributors...your creativity is inspiring!

- Kelci Conradsen, Children's Program Creative Director (Bark Architects)
- Bankfoot House team
- Caloundra Regional Gallery
- Inspirations Paint Sunshine Coast Team
- Laurie Jones, Heritage Architect
- MODE Architects
- Sparks Architects
- Sunshine Coast Council

PRINCIPAL PARTNER



OFFICIAL PARTNER



PARTNERS



PHOTOGRAPHY PARTNER



SUPPORTERS

ACE.

MEDIA PARTNERS

ARCHITECTUREAU



TOURISM PARTNERS



Draw a picture of your favourite place on the Sunshine Coast in the picture frame.





[sunshinecoastopenhouse.com.au](http://sunshinecoastopenhouse.com.au)

# OPEN HOUSE

SUNSHINE COAST  
22 & 23 OCTOBER 2022