



**OPEN  
HOUSE  
SUNSHINE COAST  
CHILDREN'S PROGRAM**

## My Journey

A vertical red line runs down the left side of the page, and horizontal blue lines are spaced across the page, creating a notebook-style writing area.

## Welcome to the Sunshine Coast Open House Children's Program

### Presented by Inspirations Paint.

We hope you enjoy exploring some of the Sunshine Coast's most exciting buildings and structures and discover more about the wonderful region we live in.

This book is full of amazing sketches and puzzles by some of the Sunshine Coast's most creative architects, designers, and organisations.

Many of the architects, designers and companies who have created the sketches in this book have also helped to create the buildings and structures that you see in and around the Sunshine Coast.

In this book you will find lots of fun things to do, puzzles to complete, fun facts to remember, and pictures that you can add your own ideas to.

There is so much to see and explore at Sunshine Coast Open House...we hope you enjoy visiting some incredible buildings on the weekend and look forward to seeing you then!

Proudly Supported by



WHAT'S YOUR NEXT PROJECT?

# THE BIG PICTURE

Architects think about even the smallest of creatures in our community when designing buildings.

Get your inspiration from nature... colour in and create your own design.





Bankfoot House  
Since 1868

## Coach and horses

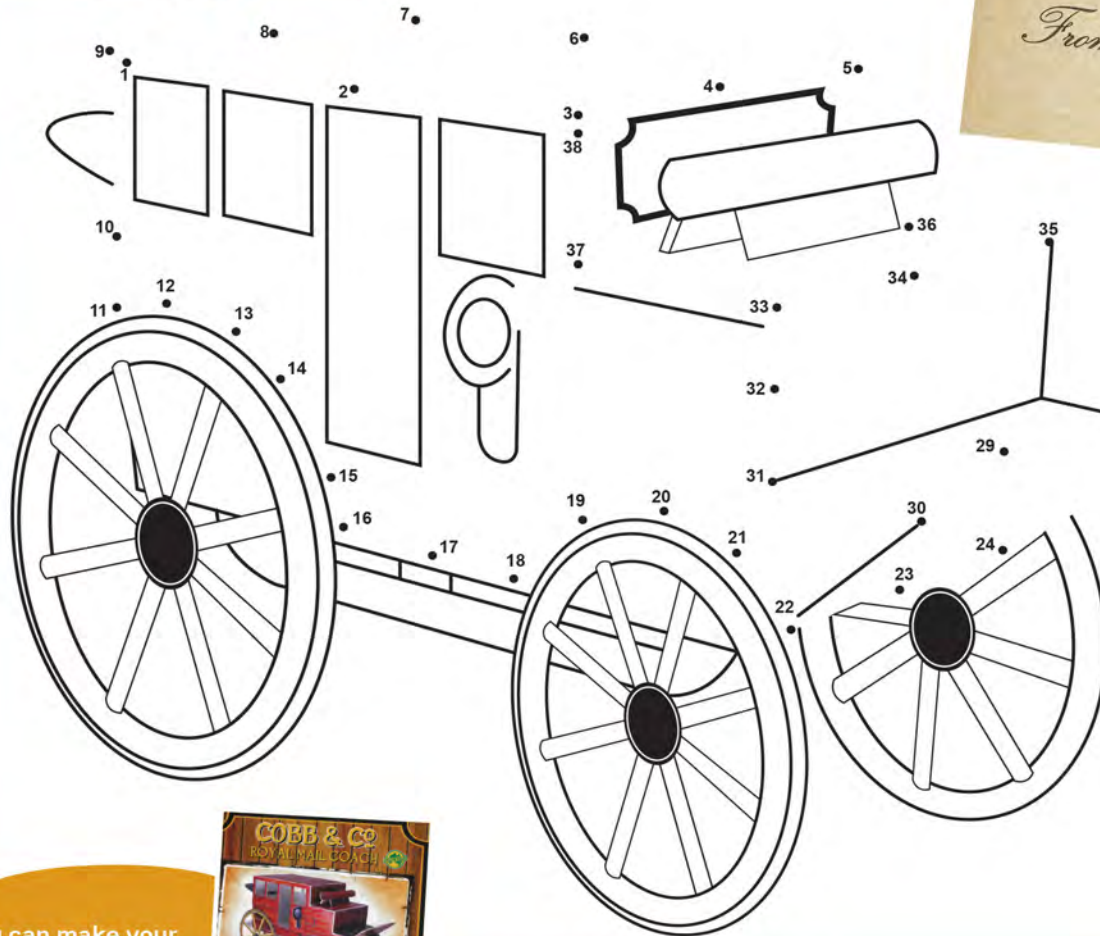


### Cobb & Co Coach

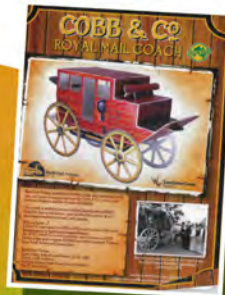
The first Cobb & Co Coach set out from Brisbane to the Gympie Gold Fields in 1868. To warn Bankfoot House of their arrival, the coach driver would sound the bugle so that lunch and new horses were ready.

Bankfoot House also provided a Post Office and accommodation.

Follow the numbers to reveal the Cobb & Co Coach and address your envelope.



You can make your own 3D Cobb & Co Coach when you visit Bankfoot House Heritage Precinct.







## PAPERBAG CITYSCAPE

### INSTRUCTIONS

Create a stunning city from paper bags and a little imagination. This fun activity is one the whole family can get involved in. Your city can be as simple or as complex as you desire.

#### Materials you will need:

*Brown and / or white paper bags, permanent black marker pen, lead pencil, acrylic brushes and paints, colour pencils and scissors.*

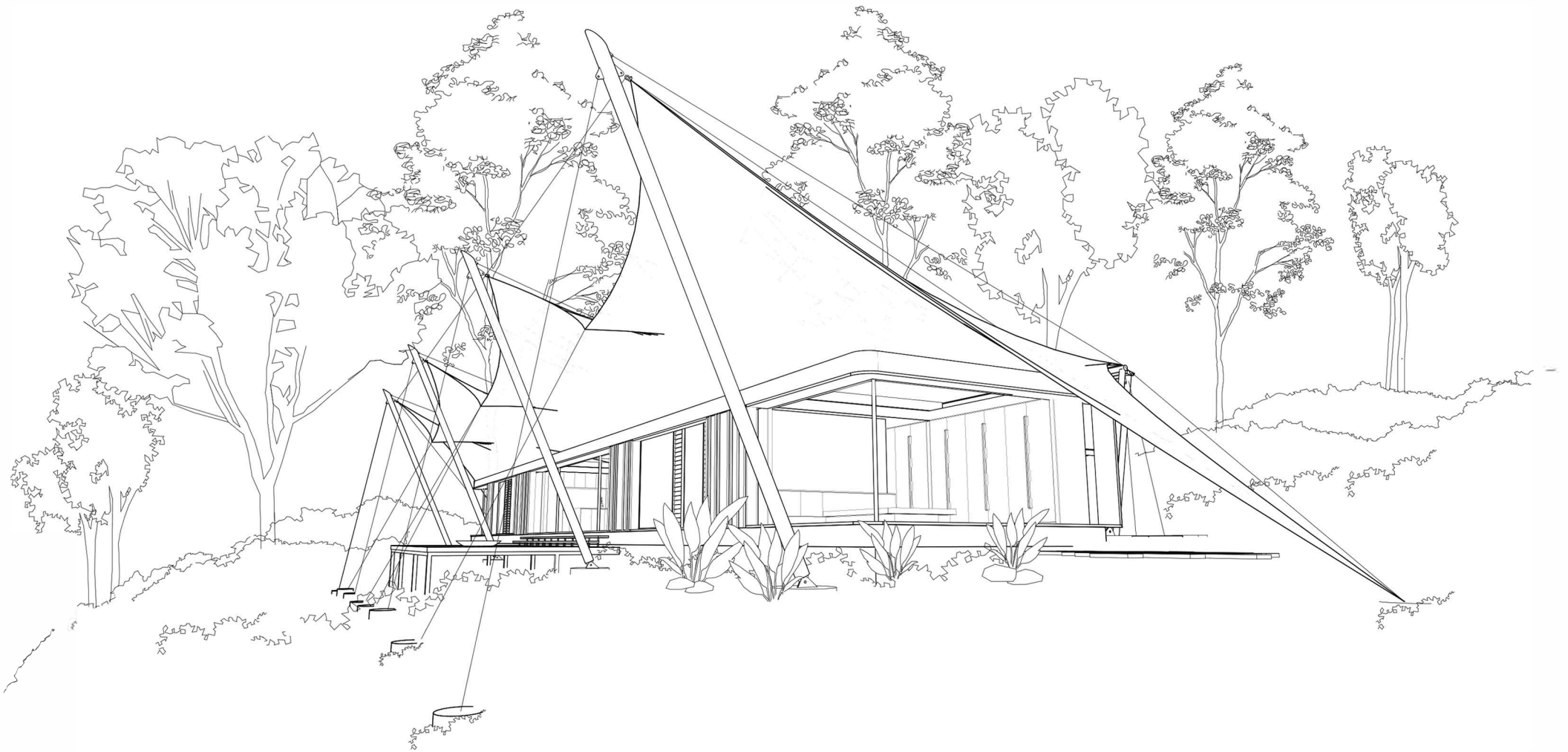
#### Have fun!

- Carefully trim the jagged-edge off the top of the brown and/or white paper bags.
- Gently fold each bag in half (from side to side) and make a gentle crease (Image 1).
- Fold both top edges towards the center crease line, and crease each side (Image 2).
- Carefully trim off the bottom edge of the bag.
- Fold corners back into place, then fold them inwards into the bag to make a pitched roof (Image 3).
- Now you are ready to design your fabulous cityscape by using the black marker and your choice of pencils or paints. Be as creative as you can!
- When you have finished designing and coloring in your buildings, arrange them into a small cityscape by opening the bottom of the bags so that they stand up by themselves (Image 4).



- People live in all types of homes! Here is a home on the Sunshine Coast that looks like a **tent**.

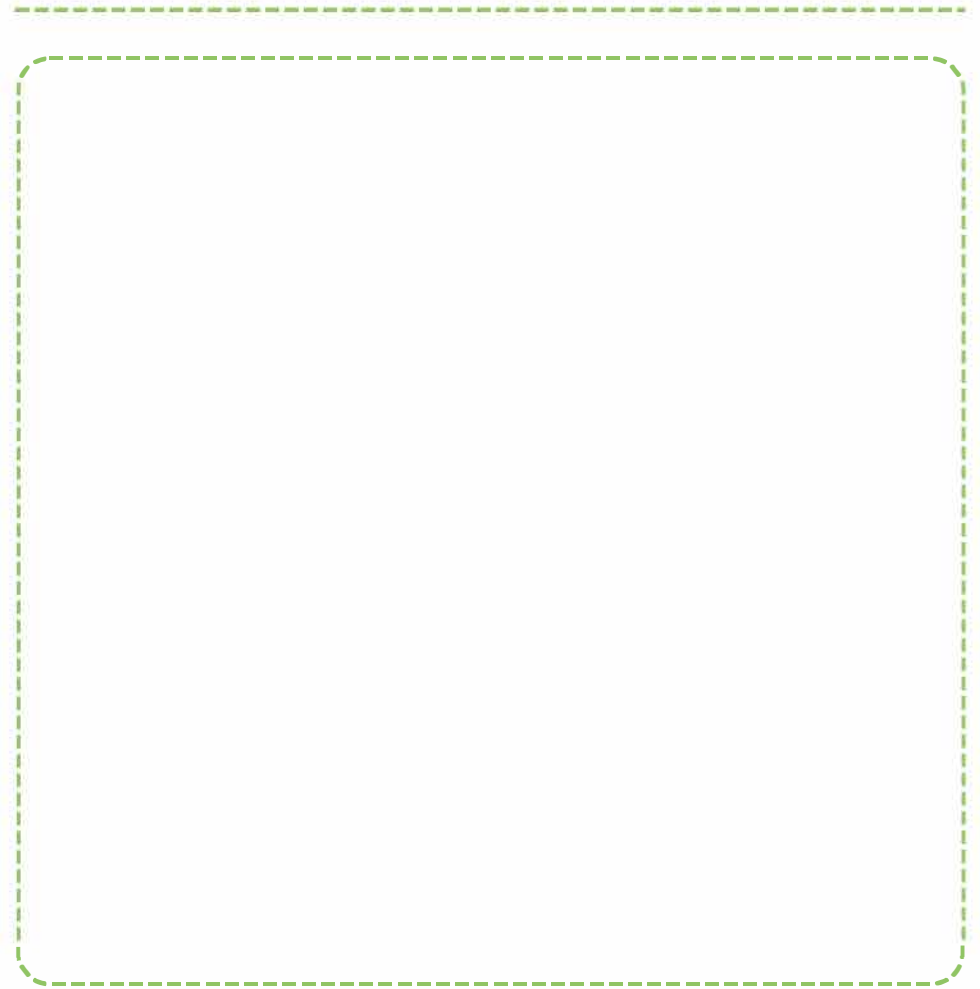
Would you like to colour it?



- If you were to design a house, what would you like it to look like?

Draw the **coolest house** you can imagine below!

- Where would this house be located?



- Can you make a list of the cool features you think the house needs to suit this location and its environment?





## DRAW A BUILDING THAT YOU VISITED TODAY....

JUST LIKE PEOPLE... BUILDINGS ARE DIFFERENT. THEY HAVE DIFFERENT FEATURES SUCH AS SHAPES, HEIGHTS, WINDOWS, VERANDAHS, ROOFS, COLOURS AND MATERIALS. DRAW YOUR FAVOURITE BUILDING (OR COPY THIS ONE) IF YOU DON'T HAVE TIME DURING YOUR VISIT, TAKE A PHOTO AND DRAW IT AT HOME.

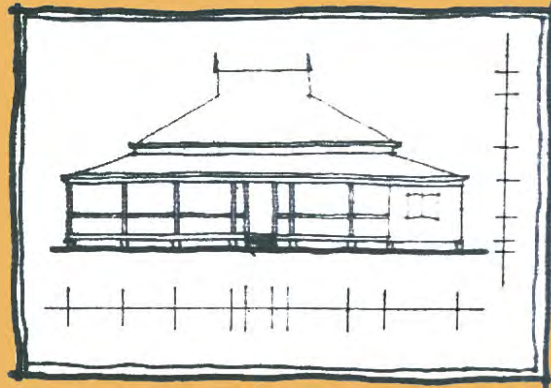
FIT YOUR DRAWING IN THE FRAME ON THE OPPOSITE PAGE, AND TURN IT TO SUIT A WIDE BUILDING LIKE A HOUSE OR A TALL BUILDING LIKE A LIGHTHOUSE.



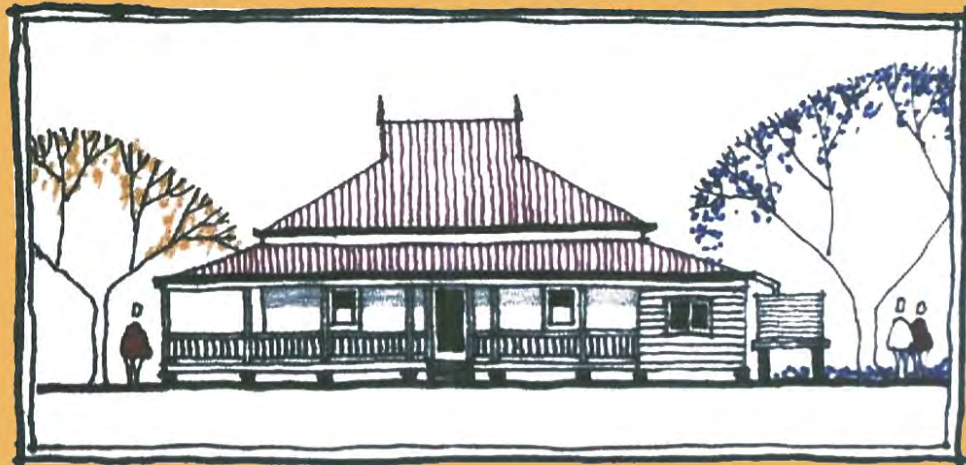
HORIZONTAL  
(LANDSCAPE)



VERTICAL  
(PORTRAIT)



START BY DRAWING THE MAIN PARTS LIGHTLY IN PENCIL TO GET THEM ALL IN THE CORRECT PROPORTIONS.



THEN ADD IN SPECIAL FEATURES AND DETAILS LIKE WINDOWS, DOORS AND BALUSTRADES.

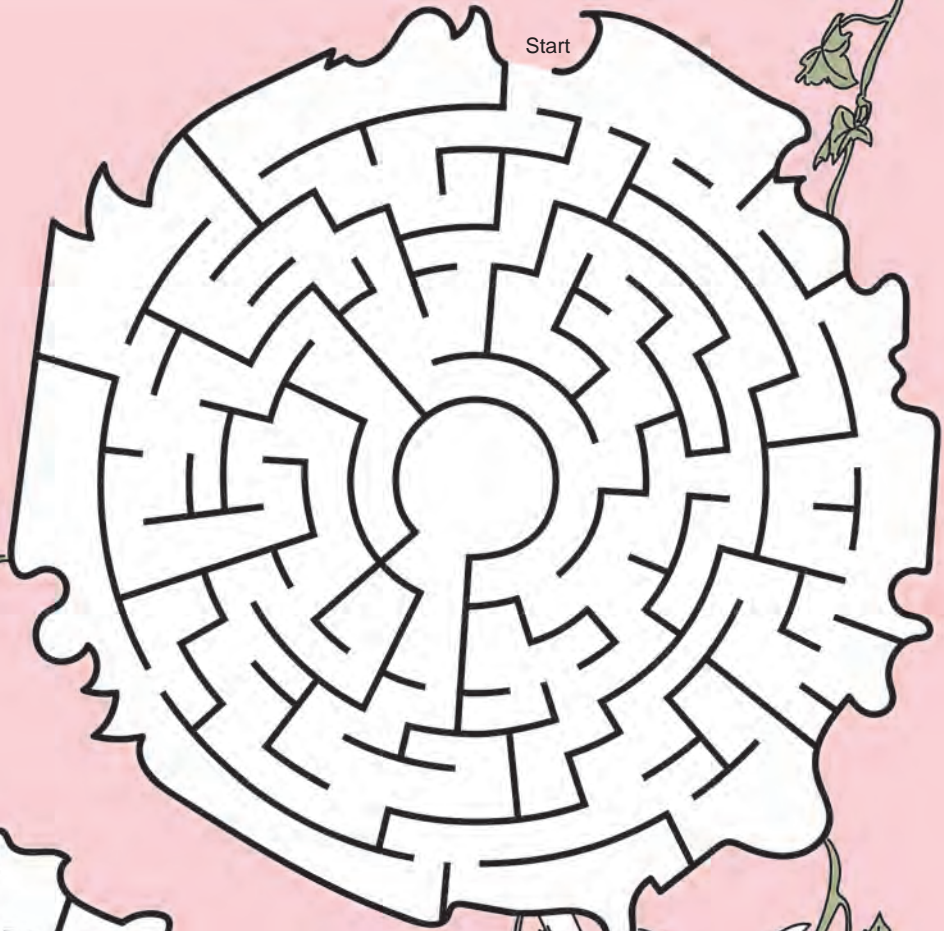
YOU CAN ALSO INCLUDE PEOPLE AND TREES.

LEAVE IT AS A BLACK AND WHITE SKETCH, OR USE COLOURED PENS OR PENCILS TO ADD TEXTURE, COLOUR AND SHADOWS.

**ENJOY DRAWING!**

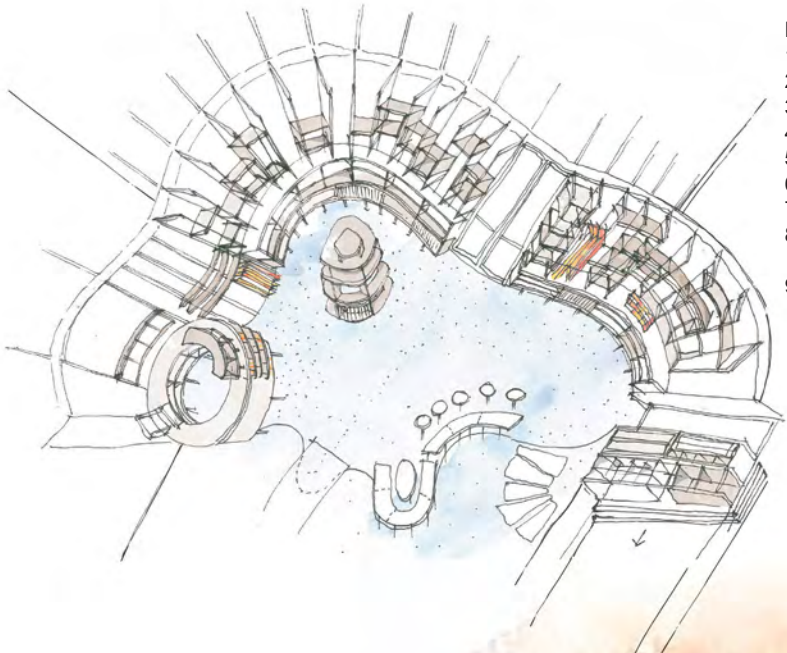
# Fairy Circle

Do not get lost in the fairies' mazes! Get to the centre to solve the puzzle.



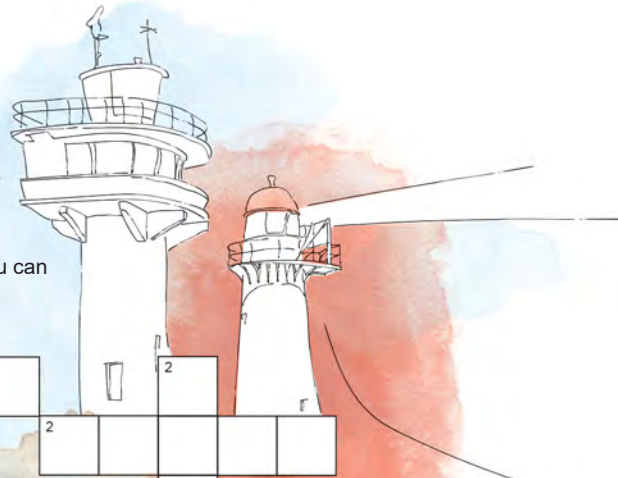
Did you know the Paperbark Pod House by Bark Architects was designed so it did not destroy a fairy circle?

Can you find the fairy ring?



**DOWN**

1. This part of old buildings is often made of shingles?
2. Caloundra's oldest building?
3. Type of timber used in old houses?
4. Where would you find a Tram Terminus on the Sunshine Coast?
5. What type of houses were built at Alfredson's Joinery?
6. How many walls does your bedroom have?
7. Curved top to a door or window opening?
8. Sunshine Coast Open House offers several walking .... where you can learn about special places.
9. Which strong metal is often used in buildings?



- ACROSS
1. Library
  2. Noise
  3. Beech
  4. Art
  5. Pioneer
  6. Bankfoot
  7. Once
  8. Tin
  9. Majestic



**ACROSS**

1. Caloundra Art Gallery was once a .....?
2. Majestic Theatre Films are silent, but the organ makes some .....?
3. Timber used in Fairview?
4. What is featured on the walls of the University of the Sunshine Coast Art Gallery?
5. Which Cottage is one of the oldest surviving residences in Buderim?
6. Which house was a Cobb & Co Coach Stop?
7. How many times has the Caloundra Lighthouse been moved from its original location?
8. Which strong metal is often used in buildings .....?
9. Oldest silent film theatre in the world?

- DOWN
1. Roof
  2. Lighthouse
  3. Plisawn
  4. Nambour
  5. Precut
  6. Four
  7. Arch
  8. Tours
  9. Iron



# SPOT THE DIFFERENCE

There are 10 to find!



List of differences:

1. \_\_\_\_\_
2. \_\_\_\_\_
3. \_\_\_\_\_
4. \_\_\_\_\_
5. \_\_\_\_\_
6. \_\_\_\_\_
7. \_\_\_\_\_
8. \_\_\_\_\_
9. \_\_\_\_\_
10. \_\_\_\_\_

Well done!



Wishlist Project

A big thank you to the Sunshine Coast Open House Children's Program contributors...your creativity is inspiring!

- Kelci Conradsen, Children's Program Creative Director (Bark Architects)
  - Laurie Jones, Heritage Architect
  - Bankfoot House team
  - MODE Architects
  - Caloundra Regional Gallery
  - Sparks Architects
  - Inspirations Paint Sunshine Coast Team
  - Sunshine Coast Council
- 

Draw a picture of your favourite place on the Sunshine Coast in the picture frame.





[sunshinecoastopenhouse.com.au](http://sunshinecoastopenhouse.com.au)

**OPEN HOUSE**  
SUNSHINE COAST