



OPEN HOUSE

SUNSHINE COAST
19 & 20 OCTOBER 2024

FREE EVENTS IN SEPTEMBER AND OCTOBER
sunshinecoastopenhouse.com.au

KEY DATES

Building and House bookings open on
Wednesday 2 October at 11am

Bookings for all events and Walking Tours will open on
Wednesday 4 September at 11am



Acknowledgement of Country

Sunshine Coast Open House acknowledges the traditional Country of the Kabi Kabi and the Jinibara Peoples of the coastal plains and hinterlands of the Sunshine Coast, and recognises that these have always been places of cultural, spiritual, social and economic significance.

We wish to pay respect to their Elders – past, present and emerging, and acknowledge the important role Aboriginal and Torres Strait Islander people continue to play within the Sunshine Coast community.

COVER IMAGE: Wallumburn House by K Architecture and Garden by Coco Dash

WELCOME

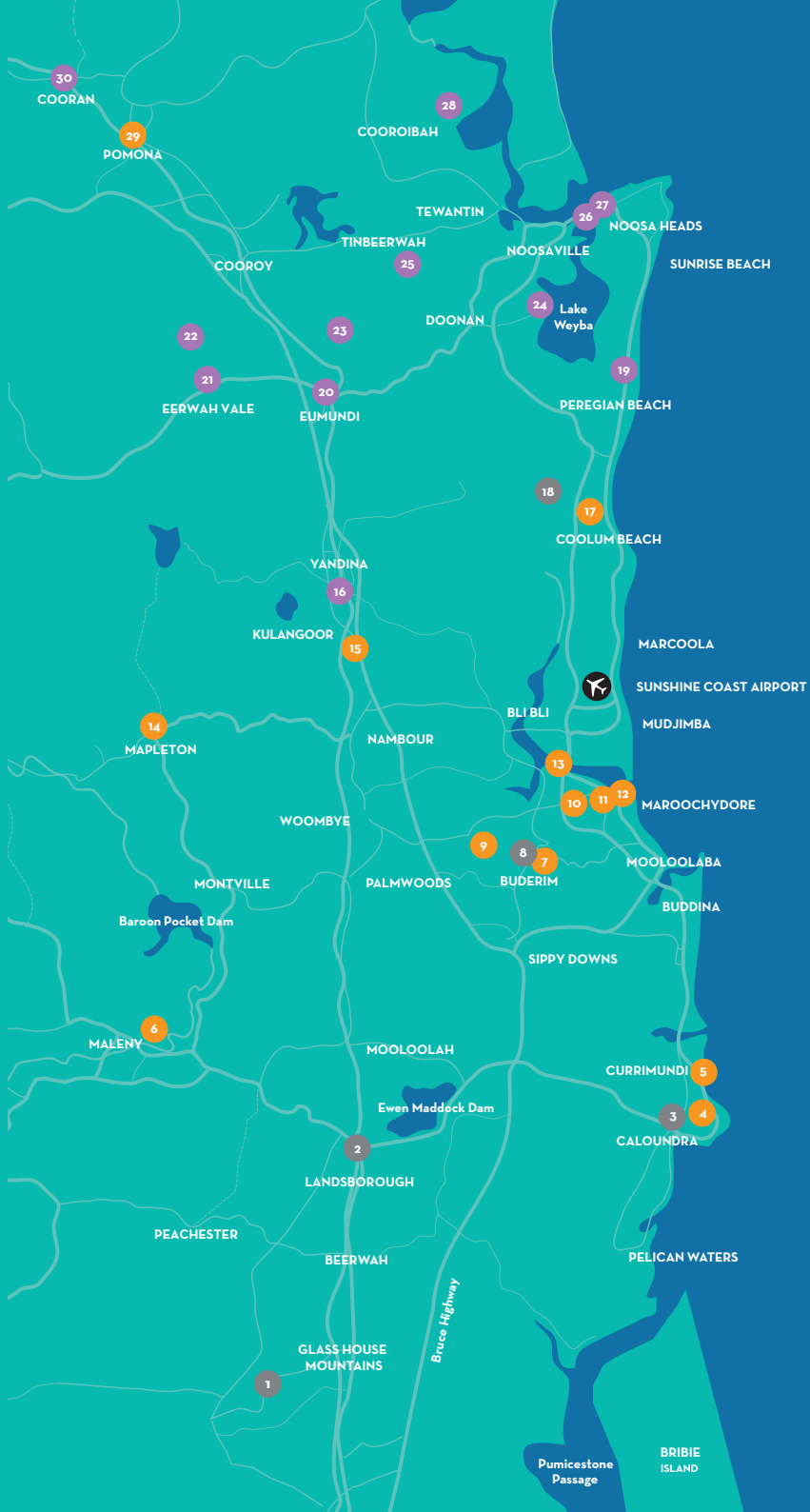
Unlock the doors to some of the Sunshine Coast's most inspiring buildings when they open to the public on Saturday 19 and Sunday 20 October 2024.

Sunshine Coast Open House is a community event which offers free behind-the-scenes access to the Sunshine Coast's best buildings ranging from private homes, corporate buildings, heritage treasures and sustainable spaces.

Enjoy meeting the people who design, build and preserve these buildings and come along to a range of special events to celebrate the region's unique history, architecture and built form.

Sunshine Coast Open House is part of the Open House Worldwide network, founded in London in 1992 and now in over 55 cities around the world.





- 1 **Bankfoot House** SAT & SUN
1998 Old Gympie Road, Glass House Mountains
- 2 **Landsborough Museum** SAT & SUN
4 Maleny Street, Landsborough
- 3 **Caloundra Regional Gallery** SAT & SUN
22 Omrah Avenue, Caloundra
- 4 **Caloundra Lighthouses** SAT
3 Canberra Terrace, Kings Beach

- 5 **Wilson Beach House** SAT
Dicky Beach

- 6 **Fairview (Pattemore House)** SAT
15 Porters Lane, Maleny

- 7 **Pioneer Cottage Buderim** SAT
5 Ballinger Crescent, Buderim

- 8 **Aspect Homebase** SAT & SUN
52 Burnett St, Buderim

- 9 **Russell Hall House - Mons** SAT
Mons

- 10 **ABC Studios Sunshine Coast** SAT
Level 1, 15 Carnaby Street, Maroochydore

- 11 **City Hall** SAT
54 First Ave, Maroochydore

- 12 **Unitywater Operations Centre** SAT
6-8 Maud St, Maroochydore

- 13 **Wheel House Boatshed** SAT
165 Bradman Ave, Maroochydore

- 14 **Mapleton House** SAT
Mapleton

- 15 **Kulangoor Cemetery** SAT
31-89 Ackerman Road, Kulangoor

- 16 **Koongalba** SUN
12 Wharf Street, Yandina

- 17 **Pandanus House Coolum** SAT
Coolum Beach

- 18 **Saltair Modular Homes** SAT & SUN
41 Quanda Road, Coolum Beach

- 19 **Tristania House** SUN
Marcus Beach

- 20 **Matso's Sunshine Coast** SUN
85 Memorial Dr, Eumundi

- 21 **The Barn at Eerwah Vale** SUN
1 Musavale Rd, Eerwah Vale

- 22 **The Cooroy House** SUN
Cooroy

- 23 **Moon Mountain Sanctuary** SUN
Eumundi

- 24 **Pan Pottery Studio** SUN
251 Eumarella Road, Weyba Downs

- 25 **Bark Art Room** SUN
413 Sunrise Road, Tinbeerwah

- 26 **Kijiji** SUN
Noosa Heads

- 27 **Noosa Blue Apartment** SUN
Noosa

- 28 **Wallumburn House and Garden** SUN
Cooribah

- 29 **The Majestic Theatre** SAT
3 Factory Street, Pomona

- 30 **Alfredson's Joinery** SUN
28 King Street, Cooran



SUNSHINE COAST MAYOR ROSANNA NATOLI

Each year, the Sunshine Coast Open House event brings to light the remarkable designs and vibrant spaces that define our hinterland and coastal communities.

This year, we are proud to continue our partnership with the dedicated community-led committee to present an exciting array of events. These include exclusive back-of-house tours, walking tours, engaging library talks, private building and garden tours, and a community forum that explores the future of our region.

For the first time, we are thrilled to showcase our region's heritage hotels. These historical gems provide a unique window into the past, offering a deeper understanding of our community's heritage while they contribute important character and identity to our towns.

We invite you to explore the architectural and historical diversity of our region, celebrating the seamless blend of great design with our sub-tropical environment.

Don't miss this rare opportunity to immerse yourself in the stories and spaces that make our region unique.

ROSANNA NATOLI
Sunshine Coast Mayor



NOOSA MAYOR FRANK WILKIE

Noosa Council supports the 2024 Sunshine Coast Open House initiative and is proud to help showcase the design, architecture, and heritage of our region. Quality design has been respected as integral to the evolution of Noosa and creating a connection between natural spaces and the built environment.

Since 1986 Council has worked to protect and preserve the discrete Noosa style, which serves to complement the region as a beautiful and livable place. This year's program includes events and back of house tours including walks, talks, forums, art classes, and the rare opportunity to visit over 30 buildings and gardens that are not generally open to the public, to discover unique and interesting spaces.

Included in the activities in Noosa are a walking tour of Cooroy/Mill Place and a heritage walk in Tewantin (hosted by community members) as well as two seminar events in Noosaville library. These events allow us to truly celebrate our home, reinforce our sense of place and showcase to visitors our architectural successes.

FRANK WILKIE
Noosa Mayor



SUNSHINE COAST OPEN HOUSE 2024 CHAIR

Sunshine Coast Open House provides an accessible forum to showcase design, architecture (both contemporary and heritage) and art via an extensive program of open buildings and community events. There are numerous buildings, houses and external spaces which exemplify good design, that will be open to the public on 19 and 20 October. The engaging range of lead up events help celebrate the benefits of good design in our everyday lives.

The Sunshine Coast Open House Committee, of which I am pleased to be Chair in 2024, encourages you to explore and experience examples of great built design and be inspired by the works of many talented architects, designers, landscape architects, artists, and heritage experts. I welcome you to join me on some visits and I encourage you to book early.

IAN DIMOND
SCOH 2024 CHAIR

FRAIA

B Arch (Distinction)



SUNSHINE COAST OPEN HOUSE 2024 AMBASSADOR

I am honoured to be the Ambassador again for Sunshine Coast Open House in 2024. The Sunshine Coast is amongst over 55 cities and regions around the world to host an Open House program. This inspiring community-led and focused event provides access to places and spaces which usually have limited access to the public. The inclusions demonstrate the innovation and benefits that good design contributes to our community's mental health and uplifting of spirit.

Good design is climatically responsive design that in turn delivers Regionality to Architecture and Place. This event also celebrates the Sunshine Coast's beach to bush heritage that respects the environment through deeply considered design principles that draw on a knowledge of climate and Country.

The Sunshine Coast School of Architecture history delivers all these outcomes and deserves the level of immersion that this event offers to its visitors. This is your opportunity to dive into its magic and learn from those that have helped create it.

DR NOEL ROBINSON OAM,
SCOH 2024 AMBASSADOR

FRAIA

*AIA Robin Gibson Award for Enduring
Architecture
Australian Institute of Architects*

PARTNERS & SPONSORS

PRINCIPAL PARTNER



OFFICIAL PARTNER



PARTNERS



PHOTOGRAPHY PARTNER



SUPPORTERS



Australian
Institute of
Architects

MEDIA PARTNERS



TOURISM PARTNERS



You are invited to walk through a selection of houses and buildings on the weekend of the 19 and 20 October. Building and House bookings open on Wednesday 2 October at 11am. Bookings for events and walking tours open on Wednesday 4 September at 11am.



STEP 1

Browse the building list at **SunshineCoastOpenHouse.com.au** or in this guidebook, pick your favourites and plan your itinerary for the weekend. Please check the day and times that the buildings are open. They vary from site to site. Some buildings offer only pre-booked tours.

STEP 2

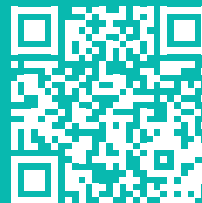
Visit our website for more building information. Follow us for live updates:

 @SunshineCoastOpenHouse

 @SunshineCoastOpenHouse

STEP 3

Explore the Sunshine Coast and enjoy your weekend. Upload photos during your Open House journey and hashtag **#SCOH24** and **#SunshineCoastOpenHouse**



Please visit
SunshineCoastOpenHouse.com.au
or scan the QR code to book.

If you have a passion for the built environment and urban landscape enter the 2024 Sunshine Coast Open House Focus on Architecture Photography Competition.

Visit participating Sunshine Coast Open House buildings allowing photography on Saturday 19 and Sunday 20 October and snap your winning photo.

All entries are judged on three criteria:

- Creativity
- Quality of photography
- Significance to architecture

Entries are judged by a committee comprising local architects, a representative from Queensland Timber Flooring, and built infrastructure photography experts from the Sunshine Coast.

OPEN CATEGORY

Open to all amateur and professional photographers. Entries can be submitted in four categories:

- Exterior • Detail
- Timber • People

**\$1,000 prize courtesy of
Queensland Timber Flooring**

STUDENT CATEGORY

Open to all school students.

Entries will be judged on the same criteria as above.

**\$250 prize courtesy of
Queensland Timber Flooring**



**All entries must be submitted (uploaded) to
www.sunshinecoastopenhouse.com.au
before 5pm on Wednesday 26 October 2024.
No limit on number of entries.**

* Please note some buildings have photography restrictions.



**Scan for
Photo Entry
page**



**inspirations
paint**

WHAT'S YOUR NEXT PROJECT?

Beerwah

4 Turner St
5208 9443

Currimundi

788 Nicklin Way
5491 4888

Nambour

92 Howard St
5441 1873

Noosa

7 Rene St
5449 8008

Launch Event

Monday 2 September 10am

City Hall

Launch of Sunshine Coast Open House 2024 with Her Excellency the Governor of Queensland, Prof. Nimmo RFD, Mayor of Sunshine Coast and Mayor of Noosa.

TICKETS: Invitation Only

Sunshine Coast Open House - Library Talks

3 – 12 September

Various locations

Do you love architecture and design? Come along to talks at the local libraries to be inspired by the design and stories of a selection of houses that will be open as part of Sunshine Coast Open House on 19 and 20 October.

You will also learn about the importance of designing for the local climate.

This session is supported by Sunshine Coast Council's Urban Design and Architecture Team and the Cool Homes for the Sunshine Coast campaign.

- Beerwah Tuesday 3 September
- Kawana Thursday 5 September
- Nambour Friday 6 September
- Maleny Monday 9 September
- Coolum Tuesday 10 September
- Maroochydore Wednesday 11 September
- Caloundra Thursday 12 September
- Noosaville Wednesday 16 October

COST: FREE

BOOKINGS REQUIRED:

sunshinecoastopenhouse.com.au



The Planning and Design of UniSC Campus

Friday 27 September

Meet at 4.30pm for a 5pm start

UniSC Lecture Theatre 7, Building C

This event will include a short design tour of the University of the Sunshine Coast Campus followed by a presentation covering the role of Romaldo 'Aldo' Giurgola (Architect for the Australian Parliament House) in developing the campus masterplan and the design of three buildings by eminent Sunshine Coast Architects with a focus on the Sunshine Coast School of Architecture.

CAMPUS TOUR GUIDE: Dr Nicholas Stevens

PRESENTERS: Lindsay Clare, Noel Robinson OAM, John Mainwaring

COST: FREE

BOOKINGS REQUIRED:

sunshinecoastopenhouse.com.au



Designing for and Managing Mould

Online session - see website for details

Learn from experts on why mould is so bad for our health, how to design your home or renovation to discourage mould and how to manage mould in your home. This is a not to be missed webinar before we head into summer and the next Sunshine Coast rainy season.

This webinar will be recorded and available on the SCOH website.

This session is hosted by Sunshine Coast Council in collaboration with Sunshine Coast Open House.

COST: FREE

BOOKINGS REQUIRED: [For the Webinar Link](#)



Connection, Conversation and Community at Makepeace Island

Tuesday 1 October - Boat leaves at 11:30am

Noosa Marina

Makepeace Island is the setting for this prestigious event.

Your exclusive ticket includes a lunch by award winning Executive Chef Zeb Gilbert, showcasing local organic produce and paired with carefully selected wines from the private collection of Moon Mountain Sanctuary.

A private boat will transport guests from the Noosa Marina to the beautiful and secluded Makepeace Island in the middle of the Noosa River.

Upon arrival you will be given a special behind the scenes talk and tour of this boutique, private hideaway, island resort co-owned by Sir Richard Branson.

Our lunch speaker for this special occasion will give an important, insightful and poetic talk about Connection, Conversation and Community and why this is essential for the future of the Sunshine Coast.

TICKETS: \$245 per person (very limited)

SPONSORS: Moon Mountain Sanctuary and Makepeace Island

FUNDRAISING EVENT FOR SCOH

Tim Ross – The Modernister is BACK!

3,4,5,6 October

Various Locations

Tim Ross is coming back to the Sunshine Coast to give two different shows at four locations. Sentimental, nostalgic and hilarious, these shows are a must for anyone interested in design, mid-century modern architecture or anyone that has fond memories of staying in motels with their family while on holidays.

MOTEL is the acclaimed live show from comedian and design nerd Tim Ross with musician Kit Warhurst that celebrates Australian motels.

MID CENTURY MODERN PROJECT turns architecturally significant buildings into temporary theatres to showcase design, comedy and music.

Thursday 3 October - 6:30pm

MOTEL. Front Bar Matso's Sunshine Coast, Eumundi

Friday 4 October - 6pm

THE MID CENTURY PROJECT. Wilson Beach House, Dicky Beach

Saturday 5 October - 7pm

MOTEL. Mapleton Hotel

Sunday 6 October - 3pm

MOTEL. CCSA Hall, Caloundra

**BOOKINGS REQUIRED:
modernisterbooks.com**



The Stories behind the creation of Noosa National Park With Phil Jarratt and special guests

Wednesday 9 October 5pm

Peppers Noosa Resort, Viewland Drive, Noosa Heads

In this Open House event, Phil will be joined by guest speakers who have played significant roles in the shaping of Noosa National Park and its surrounds. Expect an afternoon of entertainment and education, revealing some of the secrets behind the creation of Queensland's most popular National Park.

Noosa-based journalist/author/film-maker Phil Jarratt will tell the story of how he first walked the Coastal Track to surf at Tea Tree Bay in the late 1960s. A Noosa resident since 1990, he has since studied the park that now defines Noosa, and has helped tell its story through the publication of three books; *The Shaping of Noosa*, written by Noosa Parks Association luminary Dr Michael Gloster; *A Cup Of Tea With God*; and the comprehensive Noosa history, *Place of Shadows*.

COST: \$30 per person

BOOKINGS REQUIRED:

sunshinecoastopenhouse.com.au

Ask an Architect at Ace

Saturday 12 October 3pm-6pm

Ace Stone + Tiles, 16/18 Bearing Ave, Warana

Are you thinking about building a new home or renovating an existing one? Ask an Architect provides the perfect opportunity to seek inspiration from a local architect in a relaxed environment. FREE 30 min session.

COST: FREE

BOOKINGS REQUIRED:

www.architecture.com.au/events

SPONSOR: Ace Stone + Tiles

www.acestone.com.au/sunshine-coast/



Architect for a Day

Saturday 12 October 8.30am – 1.00pm

The MET, Maroochydore City Centre

The Australian Institute of Architects Queensland Chapter would like to extend an invitation to students in years 10, 11 and 12 considering a career in architecture and design.

Students will participate in a workshop, and discover what it's like to study architecture, landscape architecture, design, urban design, and associated subjects including town planning, and sustainability.

Students will enjoy:

- Speaking with current graduates, academics and practitioners about architecture, design, planning and sustainability pathways.
- Learning through making with dynamic and fun activities including model making and design sketching.
- Hear from architects who will provide an insight about what it is like to be an architect day-to-day.

This workshop is made possible by the Australian Institute of Architects as part of the Sunshine Coast Open House.

The session will include a short building tour of Sunshine Coast Council's City Hall.

COST: FREE

BOOKINGS REQUIRED (VERY LIMITED):

www.architecture.com.au/events

SPONSORED AND HOSTED BY:

Australian Institute of Architects

Architecture Photography Workshop with Hossein Farahani

Sunday 13 October 10am – 12.30pm

University of the Sunshine Coast

Join professional photographer Hossein Farahani on the grounds of Sunshine Coast University for a workshop on photographing buildings and architectural details. Hossein will share his expert knowledge and then you will explore the architectural buildings of this university campus to use your new photography skills.

There are many architectural greats that have contributed award winning buildings to the Uni SC campus including: Romaldo 'Aldo' Giurgola (Architect for the Australian Parliament House), John Mainwaring, Noel Robinson, Kerry and Lindsay Clare, Daryl Jackson and many others.

There will be a group "Photography Pin Up" via Zoom a week after this session at a time to be confirmed. This is where participants can discuss their photos and receive valuable feedback.

A great session for design and architecture students, design enthusiasts and anyone who loves sharing fabulous pics on Instagram.

COST: FREE

BOOKINGS REQUIRED: limited numbers

What and where is the Maroochydore City Centre?

Wednesday 16 October 12pm

Foundation Place, Market Lane Maroochydore

This is a unique opportunity to gain a birds eye view of the new Maroochydore City Centre on this exclusive tour. Hear about the history of the development of this site, what you will find here, what is to come, and why it is important to the future of the region.

COST: FREE

BOOKINGS REQUIRED

GUIDES: SunCentral and Walker Corporation

Maximum people 25

Queensland Timber Flooring Information Sessions

**Wednesday 16 October 1pm – 2.30pm & 5.30pm – 7pm
(2 sessions)**

103 Maud Street, Maroochydore

Designing and specifying timber – Session for Architects

Things to consider when designing with timber and specifying timber flooring for your projects.

Time: 1pm – 2.30pm

Choosing timber flooring for your home – Session for the general public

Things to consider when choosing a timber floor for your home including colour and environment.

Time: 5.30pm – 7.00pm

COST: FREE

**SPONSORED AND HOSTED BY:
Queensland Timber Flooring**

Smart Infrastructure at Maroochydore City Centre

Thursday 17 October 12pm and Saturday 19 October 11am and 12pm (40min per tour)

Maroochydore City Centre

Tour Maroochydore City Centre and explore the smart infrastructure elements incorporated into the heart of the region. Get an exclusive insight into the mobile data trailer and the latest technology to improve community services while ensuring privacy.

COST: FREE

BOOKINGS REQUIRED:

sunshinecoastopenhouse.com.au

GUIDE: Michael Whereat

Maximum people 20



What is Home? Sunshine Coast Open House Forum

Friday 18 October 6pm
Coolum Civic Centre

What is Home? Stories and reflections on where and how we live.

Come along to this inspiring, interactive and heart-felt event to hear a selection of speakers from different backgrounds and perspectives talk about What is Home? 8 speakers for 8 minutes, with audience participation and some lucky door prizes.

Home is a fluid and complex concept. For some it's a quiet apartment filled with books, for others it's a bustling multi-generational household, for some Home is a landscape, and yet some people have no Home.

Home is many things - where culture, memory, architecture, Country, values and daily life intertwine.

A not to be missed event that will touch on Homes of the past, present and future.

A fun community event.

A big welcome to all the AIA Symposium attendees.

COST: \$25

BOOKINGS REQUIRED:

sunshinecoastopenhouse.com.au

HOSTED BY: the Planning Institute of Australia (PIA)



**EVERYONE
HAS A STORY.**
Conversations
FROM THE SUNSHINE COAST AND NOOSA
PODCAST

IN Conversation with Architects

Saturday 19 October 12pm-3pm
Club Hotel Namba

Hello Sunshine Magazine invites you to say 'Hello' to Savvy! Surprising! & Spirited! Architects with an afternoon of insightful, interesting and entertaining conversation over a three-course feast showcasing local produce by Wayd Bailey with a welcome drink by the globally award-winning Sunshine & Sons. Join writer, radio star and podcast host John "JC" Caruso from the Everyone Has a Story: Conversations from the Sunshine Coast and Noosa podcast for this very special event in one of the region's most iconic pubs.

COST: \$125 per person

BOOKINGS REQUIRED: Visit

sunshinecoastopenhouse.com.au



Urban Sketchers with Peter Richards at Palmwoods Hotel

Saturday 19 October 9.30am-12pm
Meet in Lawson Park

Urban Sketchers with Peter Richards at the Woombye Pub

Sunday 20 October 9.30am-12pm
Meet in the Woombye Memorial Park

Peter will start the session with an introductory talk and sketching demonstration.

Bring your own materials some additional pens and pencils will be on hand.

COST: FREE



ACE.

Sunshine Coast Walking Tours

Discover special places and learn more about the Sunshine Coast's heritage during these small group walking tours.

All tours are **FREE**.

Book your spot via sunshinecoastopenhouse.com.au or scan the QR code below.

Scan the QR code to book a walking tour:



Cooroy Lower Mill Site Tour

Saturday 12 October 10am - 11.30am

Cooroy Butter Factory Arts Centre

Join local Landscape Architect, Shaun Walsh and come on a precinct tour examining the best of heritage and modern award winning design at the Cooroy Lower Mill Site including the heritage listed Cooroy Butter Factory, the modern Cooroy Library, voted one of the top 10 coolest libraries in the world, and the award winning remarkable Hinterland Adventure Playground, and finally the kilns and hoppers of the former Cooroy Lower Mill Site, now state heritage listed. The Kilns and Hopper will be open as part of the Cooroora Woodworkers Show and forms a great conclusion to the walk.

GUIDE: Shaun Walsh, Landscape Architect
COST: FREE

REQUIREMENTS: Bring a hat and water bottle. Wear closed shoes

BOOKINGS REQUIRED: Turn up if you forget to book

Walk Tewantin's Past

Monday 14 October 10am – 11:30am

Parkyn Hut, 120 Poinciana Avenue, Tewantin

Walk through Tewantin's old business district and along the riverbank past where the wharves were built. Hear about the life of the early timber getters. Discover connections to the pioneering families and hear the story of our First Nations peoples in this area. Enjoy a morning tea at Tewantin CWA. Proudly presented by Tewantin Heritage and Historical Society, and Parkyn Hut.

GUIDE: Bruce Cuttle

COST: FREE

BOOKINGS REQUIRED: www.parkynhut.com

Landsborough Cribb Street Walk

Saturday 19 October 9am – 10am,

10:30am – 11:30am (1 hour each)

Central Shelter, in-front of Railway Station

Take a stroll through time and be refreshed by the newly upgraded Cribb Street Streetscape. Explore the heart of Landsborough, where you will experience the recently completed streetscape works, and hear about the town's rich history that has informed the design today. Starting at the site of former railway refreshment rooms, sit under the new contemporary structures designed by Bark Architects and learn about the design references. As you are guided through the street, you will get to hear stories of the past and how these have been incorporated in design and art elements. Last but not least, be one of the only members of the public to see inside of the heritage listed WW2 Air Raid Shelter – opened for this event only.

GUIDES: Alissa Huie and Peter Connell

COST: FREE

BOOKINGS REQUIRED

Maximum people 30 per group





Bulcock Street and Bulcock Beach Walks

Have you ever walked down Bulcock Street or along Bulcock Beach and asked yourself who were the first settlers? What were the first structures and what were they used for? Did Caloundra play a vital role during World War II? These and many more questions will be answered as we walk along these streets, discovering past and present information. Join members of the Caloundra Family History Research Group and let their excitement help you explore your own backyard.

Bulcock Street Walk

Saturday 19 October, 9am

Bus stop at the corner of Bulcock Street and Canberra Terrace

GUIDE: June Blackburn

COST: FREE

BOOKINGS REQUIRED:

www.caloundrafamilyhistory.org.au

Maximum people 20

Bulcock Beach Walk

Sunday 20 October, 9am

La Promenade Cafe in Tay Avenue

GUIDE: June Blackburn

COST: FREE

BOOKINGS REQUIRED:

www.caloundrafamilyhistory.org.au

Maximum people 20

Moffat Beach Heritage Tour

Saturday 19 October 9.30am – 11am

Eleanor Shipley Park, Bryce Street

Tour the Moffat Beach Precinct and beach houses and hear the story of this stunning location from the gold rushes, post-WWII and the building boom, to the present day. Learn about the architecture of the time from local Heritage Architect, Roger Todd.

GUIDE: Roger Todd, Heritage Architect

COST: FREE

BOOKINGS REQUIRED

sunshinecoastopenhouse.com.au

Maximum people 20



History Restored: the former Shire Council Chambers, Landsborough

Saturday 19 October & Sunday 20 October

Daily tours on the hour during opening hours (open 10am-3pm)

Landsborough Museum

To celebrate 100 years since the opening of the Landsborough Shire Council Chambers, the building has been subject to significant internal works to restore and reveal its history. Visitors can explore the space with our knowledgeable guides and hear about the challenges and successes in the project. Highlights include admiring the refreshed 1960s colour scheme and peeking inside the old safe!

GUIDE: Jacqueline Treloar

COST: FREE

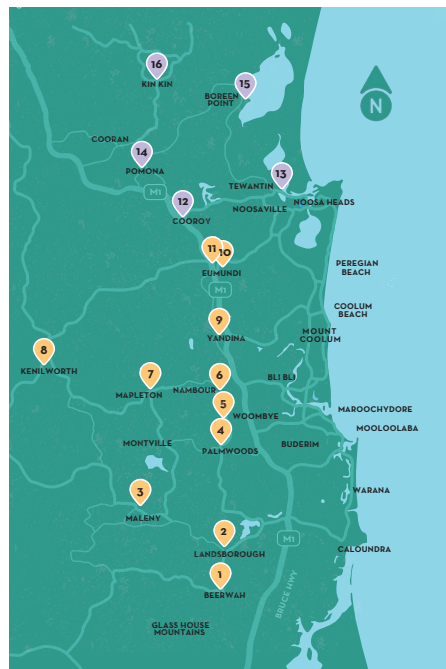
BOOKINGS REQUIRED: NO

Maximum people 15 per group

Showcasing the 16 Heritage Pubs of the Sunshine Coast and Noosa



20 SEPTEMBER - 20 OCTOBER 2024
CELEBRATING THE 16 HERITAGE PUBS



We invite you to celebrate the role, importance, and history of the 16 Heritage Pubs of the Sunshine Coast and Noosa region. These grand old buildings contribute so much to the character and identity of our hinterland towns and villages.

Once the lifeblood of every country town, these grand old watering holes still stand as proud reminders of history. Scattered across the region from Beerwah in the south to Kin Kin in the north, the 16 historic pubs invite you to experience all they have to offer. We are showcasing these iconic heritage buildings from the 20 September to the 20 October 2024.

Embark on a country drive to discover the heritage pubs of the Sunshine Coast and Noosa. Pick up your map of the 16 Heritage Pubs of Sunshine Coast and Noosa.

**Scan the QR code for
Heritage Pub Map**



Happy Hour: Discover Noosa's pubs, past and present

Thursday 19 September 6pm – 7:30pm

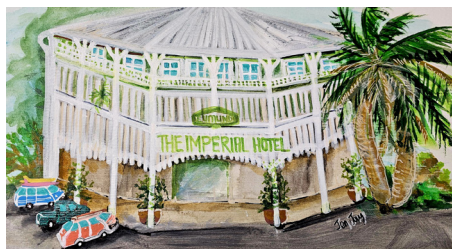
Noosaville Library - 7 Wallace Drive, Noosaville

Join Heritage Architect Stephanie Keays for a virtual pub crawl around some of Noosa Shire's historic pubs, past and present. Learn about the architects and builders behind them, their history and some of their quirky stories.

This session is hosted by Noosa Council in collaboration with Sunshine Coast Open House.

COST: FREE

BOOKINGS REQUIRED



Paint and Sip on the Verandah at the Imperial Hotel

Sunday 13 October 10:30am – 12:30pm

Imperial Hotel, Eumundi

Spend the morning with renowned local artist Jeanette Smith on the verandah of the Imperial Hotel. Jen will demonstrate and share easy steps to get you painting. All painting abilities are welcome, come along to tap into your creative side.

COST: \$15 tuition and materials provided

BOOKINGS REQUIRED

SPONSOR: Inspirations Paint



inspirationspaint.com.au



Painting in the grounds of the Apollonian Hotel

Saturday 12 October 10:30am – 12:30pm

19 Laguna St, Boreen Point

Spend the morning with renowned local artist Jeanette Smith, outdoors, painting "En-plein-air" style which means to paint outdoors, on the sweeping lawns or under the veranda of the Apollonian. Jen will demonstrate and share easy steps to get you painting. All painting abilities are welcome, come along to tap into your creative side.

COST: \$15 tuition and materials provided

BOOKINGS REQUIRED

SPONSOR: Inspirations Paint



inspirationspaint.com.au



PUB SHOWCASE



1

BEERWAH HOTEL
53 Beerwah Parade, Beerwah



2

LANDSBOROUGH HOTEL
32 Cribb street, Landsborough



3

MALENY HOTEL
6 Bunya street, Maleny



4

PALMWOODS HOTEL
28 Main street, Palmwoods



5

WOOMBYE PUB
3 Blackall street, Woombye



6

CLUB HOTEL NAMBA
80 Currie st, Nambour



7

MAPLETON PUB
2 Flaxton Drive, Mapleton



8

KENILWORTH HOTEL
18 Elizabeth street, Kenilworth



9

YANDINA HOTEL
1 Stevens street, Yandina



10

THE IMPERIAL HOTEL
1 Etheridge street, Eumundi



11

MATSO'S SUNSHINE COAST
85 Memorial drive, Eumundi



12

COOROY HOTEL
38 Maple street, Cooroy



13

ROYAL MAIL HOTEL
118 Poinciana avenue, Tewantin



14

POMONA HOTEL
1 Station street, Pomona



15

THE APOLLONIAN HOTEL
19 Laguna street, Boreen Point



16

KIN KIN HOTEL
69 Main street, Kin Kin



HERITAGE PUB QUIZ - WIN A MEAL AT A LOCAL HERITAGE PUB

Be in the running to win a \$100 meal voucher to one of 16 Heritage Pubs

WHAT DO YOU NEED TO DO TO WIN:

1. Answer the 8 questions correctly
2. Email your answers to info@sunshinecoastopenhouse.com.au
3. To double your chances, take a selfie at a heritage hotel, upload to social media, tag the hotel and [#sunshinecoastopenhouse](https://www.instagram.com/sunshinecoastopenhouse)

HERITAGE PUB QUESTIONS

1. Which heritage hotel was relocated from the Gympie Goldfields and is the oldest pub in the region?
2. Which 1910 pub was advertised in the Courier Mail as 'the coolest best resort in Queensland'?
3. Were the Kenilworth, Beerwah and Nambour Hotels built because of the Bruce Highway opening in 1930?
4. How many pubs are in Eumundi? What are they?
5. What was the former name of the Woombye Pub?
6. Which pub is on the Obi Obi Creek?
7. Which pub has Mt Cooroora as its back drop?
8. Which pub is next to Parkyn's Hut?

Entries close at 6pm on Sunday 20 October 2024. Winners will be contacted on 28 October 2024.



1 BANKFOOT HOUSE HERITAGE PRECINCT

SATURDAY & SUNDAY

ADDRESS. 1998 Old Gympie Road,
Glass House Mountains

OPEN. Saturday 19 & Sunday 20 October
10am – 3pm each day (no booking required)

TOURS. Special built heritage tours on the
half hour (last tour 2.30pm). Visitors will
learn about the investigation to define the
house's most significant period, the oldest
structure on the property and the restored
shed project.

TOUR TIP. Limited wheelchair access

ARCHITECT. Mary Grigor Centre – Tim
Ditchfield Architect

BUILT. 1868 with additions and extensions
in 1878, 1930, 1960, 2015, 2018, 2021.
Heritage Listed.

WEBSITE. heritage.sunshinecoast.qld.gov.au

Heritage specialists, archaeologists and First Nations' representatives have been engaged to uncover more about Bankfoot House and its surrounds. The house has recently been re-painted to reflect its most significant period, and a Virtual Reality experience shows life before European settlement.

State heritage listed Bankfoot House is the oldest surviving residence in the district. Built in 1868 in time to greet the first Cobb & Co coach travelling from Brisbane to the Gympie goldfields, it offered a lunch stop, staging post, post office and accommodation.

In 1878 a new building was constructed at the rear of the original house using local pit-sawn timber, beech and cedar. Other earlier buildings included a butcher shop, dairy, laundry, stables and feed shed. After surviving many years, the 1868 house was dismantled in 1930, with some timber used to extend the 1878 house. Changes included a lower roof-line and new kitchen. In the 1960s the northern and eastern verandahs were enclosed.

The property remained in the same family for 134 years until 2004 when Council purchased the building and its contents. In 2015 the architecturally designed Mary Grigor Centre was built as an interpretive, research and archival space, and in 2018 the old shed was restored.





2

LANDSBOROUGH MUSEUM

SATURDAY & SUNDAY

ADDRESS. 4 Maleny Street, Landsborough

OPEN. Saturday 19 & Sunday 20 October, 10am - 3pm each day (no booking required)

TOURS. Self-guided tours with volunteer guides in attendance - 30 mins per tour

TOUR TIP. Wheelchair access

ARCHITECT. Walter Carey Voller

BUILT. Shire building built in 1924. Rammed-earth extension built in 1988.

WEBSITE. heritage.sunshinecoast.qld.gov.au;

hip-roofed, rectangular building constructed from local timbers supplied by A.E. Round. Chamferboards were used in the building and west extension. Much of the original chambers remains unaltered including the lining, picture rail and battened ceiling.

The original shire chambers now forms a significant part of the Landsborough Museum. The building was acquired by the Landsborough & District Society in 1976.

In 1988 the old Council shed was renovated and this extension was clad in rammed-earth. Following these major changes, the Landsborough Museum was reopened on Australia Day in 1988 by J.L. Beausang, the last chairman of Landsborough Shire and first mayor of Caloundra City.

The building became state heritage listed in 1999 due to its significance associated with the architect, contribution to the streetscape and the development of local government in the region.

Within the museum, the history of local government administration of the original Landsborough Shire Council is preserved. Photos, memorabilia, artefacts, equipment, and everyday items offer an insight into early settlement and regional development.



In 1924, renowned architect, Walter Carey Voller, designed and built the Landsborough Shire Council Chambers. It is a modest, low-set,



©Peter Hyatt

3 CALOUNDRA REGIONAL GALLERY

SATURDAY & SUNDAY

ADDRESS. 22 Omrah Avenue, Caloundra

OPEN. Saturday 19 and Sunday 20 October,
10am – 2pm (no booking required)

TOURS. Self-guided access

TOUR TIP. Wheelchair access.

ARCHITECT. Bark Architects

BUILT. 2000 with shop refurbishment in
2015 and foyer/store, new collection store
and Artroom program space refurbishment
in 2018

WEBSITE. gallery.sunshinecoast.qld.gov.au



Caloundra Regional Gallery opened in August 2000 and is the flagship visual art space of the Sunshine Coast Local Government Area. The Gallery presents a changing program of curated and touring exhibitions featuring leading local and national artists. The curators and education staff develop and deliver a range of exhibitions and public programs exploring the unique

culture and character of the Sunshine Coast, as well as broader developments in Australian contemporary visual art and scholarship.

In 1998, Bark Architects won a competition to design the Caloundra Regional Art Gallery and it stands today as one of the firm's very first projects. This project realised the Council's proposal to upgrade and convert the old Caloundra Library into an Art Gallery to act as a hub for Caloundra's growing civic and cultural precinct. The transformed space integrates a series of flexible spaces with pivoting and sliding wall panels. Although remodelled, the existing building is visible through a new, fully-glazed retail space on the northeast corner of the plan. Alvar Aalto's 1937 undulating flower vase was a strong reference for the fluid plan of the space created. As such, the gallery building is conceived as a sculpture in its own right – a sinuous volume with soft, fluid contours. The articulated membrane of glass transforms from a kaleidoscope that enhances the changing light throughout the day into a lantern amongst the trees at night.

In 2016 a mural by Western Australian artists Kyle Hughes-Odgers and Andrew Frazer was commissioned by Sunshine Coast Council's Public Art Unit for the south external wall of the gallery building, as part of the inaugural Horizon Festival of Arts and Culture.



© 1968-70 Lighthouses by A Fulton Regional Lighthouse Engineer, from Colin Gladstone

4

CALOUNDRA LIGHTHOUSES

SATURDAY ONLY

ADDRESS. 3 Canberra Terrace, Kings Beach

OPEN. Saturday 19 October, 10am – 4pm
(no booking required)

TOURS. Rolling guided tours. 30 min. 6 people per tour

TOUR TIP. No wheelchair access
Please wear enclosed shoes

ARCHITECTS. 1896 Lighthouse - Cullen
(Engineer); 1968 Signal Station - Queensland
Department of Harbours and Marine

BUILT. 1896/1968. Heritage Listed.

WEBSITE. [sunshinecoastplaces.com.au/
caloundra/kings-beach/canberra-tce/3-
canberra-tce---lighthouses](http://sunshinecoastplaces.com.au/caloundra/kings-beach/canberra-tce/3-canberra-tce---lighthouses)

The Caloundra Lighthouses mark the entry to the North West Channel, the main shipping route into Brisbane.

The 1896 lighthouse was constructed with a timber frame and corrugated iron cladding, a construction type unique to Queensland lighthouses.

In 1968 it was replaced by the Signal Station, Light and Radar Installation, a reinforced concrete structure. The two sat side by side until 1970 when the 1896 lighthouse was relocated to Golden Beach. It remained there for 29 years. After the Signal Station was decommissioned due to changing technology, the 1896 lighthouse was restored to its original position.

It is Caloundra's oldest building.

There are spectacular views to the shipping channel, Moreton Island and the Glass House Mountains. Caloundra's European history is closely linked to the story of the lighthouses, and the two buildings provide evidence of the history of lighthouses from both ends of the time scale.





© Jon Linkins

5 WILSON BEACH HOUSE (DICKY BEACH HOUSE)

SATURDAY ONLY

ADDRESS. Address provided on booking

OPEN. Saturday 19 October

TOURS. Pre-booked tours at 12pm - 3pm

30 mins - 20 people per tour

BOOK. sunshinecoastopenhouse.com.au

TOUR TIP. No wheelchair access

ARCHITECT. John Railton

BUILT. 1969

WEBSITE. sunshinecoastplaces.com.au/caloundra/dicky-beach/ngungun-st/15-ngungun

"Metaphorically, the beach house also acts like a treasure chest: opening up to its owners during summer while remaining an elusively sealed object for curious architecture students out to pay homage during winter." Monument Magazine, Residential Special 2005

Built as a holiday house and located on a dune on the Pacific Ocean front, this small timber house at Dicky Beach was built as a "robust box" that contained "all the requirements including the car in a large open interior space". Designed by John Railton, a pivotal figure in Queensland architecture, and built in 1969, the Wilson Beach House is one of the few Railton houses in its original state.

A small treasure and an example of regional Modernism, Railton's house combines the Modern gesture of double-height volume nearest the beach, with a wall of six large double hung windows with solid panel and glass compartments tall enough to walk under. Hopper windows and louvre panels provide ventilation on the other walls. Finishes were almost "packing case" in nature with sawn Oregon weatherboard cladding, hessian lining, straw board ceiling and concrete floor.





6 FAIRVIEW (PATTEMORE HOUSE)

SATURDAY ONLY

ADDRESS. 15 Porters Lane, Maleny

OPEN. Saturday 19 October, 10am – 3pm
(no booking required)

TOURS. Self-guided tours with volunteer guides in attendance - 30 mins per tour

TOUR TIP. Wheelchair access. Bring a picnic, we have tables and chairs out

ARCHITECT. Built by the Pattemore Family
BUILT. 1907

Fairview is an elegant farmhouse and a State heritage listed property located in North Maleny. It sits on about 2.5 hectares of land surrounded by gardens, paddock and fruit trees. Also known as Pattemore House, it was built in 1907 by the four Pattemore brothers for their parents – John and Emily Pattemore – from white beech timber, grown, pit-sawn and dressed by hand on the property. Fairview is one of the oldest examples of early twentieth century farmhouses still in its original location.

The Pattemores and subsequent families who lived there were all known for their love of gardening, and the Friends of Pattemore House are restoring the heritage gardens to their former eras, working to an approved Landscaping Master plan.

The Friends of Pattemore House research stories, photographs, documents and artefacts related to the property. They promote the property's interesting history to visitors to ensure the public can access and appreciate this unique heritage venue. The Friends do this via regular open days, historical displays, short films, exhibitions and private group tours.





7 PIONEER COTTAGE BUDERIM

SATURDAY ONLY

ADDRESS. 5 Pioneer Crescent (formerly Ballinger Crescent), Buderim

OPEN. Saturday 19 October, 10am – 3pm
(no booking required)

TOURS. Self-guided access

TOUR TIP. Limited wheelchair access

BUILDER. Harry Board

BUILT. 1882. Heritage Listed.

WEBSITE. buderimhistoricalsociety.com



Pioneer Cottage Buderim is an example of early settlement of Buderim as an agricultural area, based originally on the cultivation and

processing of sugar cane. It is one of the oldest surviving residences in Buderim, remains substantially intact, and demonstrates the characteristics of an early 1880's farmhouse built of local timbers no longer generally available. The cottage was gifted to the Buderim community in 1965 and there has been substantial community effort in restoring and maintaining the cottage in good condition.

The cottage was erected for Buderim settlers John Kerle Burnett, his wife Ann North and their family by Harry Board, on 20 acres selected in 1878 for £15. Constructed of pit sawn timber it functions as a house museum and headquarters of the Buderim Historical Society. Local timbers were used to construct the house – tallowwood (*Eucalyptus microcorys*) for floor bearers, white beech (*Gmelina leichhardtii*) for floors, walls and ceilings, and red cedar (*Toona ciliata*) for doors and joinery. The timber was felled from the property or nearby and pit sawn. The core of the building initially comprised a central hallway and four rooms – front parlour, front bedroom, rear dining room and rear bedroom. The stairs and upstairs bedrooms were added as the family grew. The original shingle roof was replaced between 1907 and 1909 with corrugated iron, and the rear verandah was enclosed in the 1920s. The original kitchen and oven were behind the main building.



8 ASPECT STUDIOS

SATURDAY & SUNDAY

ADDRESS: 52 Burnett St, Buderim

OPEN: Saturday 19 & Sunday 20 October
9am – 1pm each day (no booking required)

TOURS: Self-guided access - 20 minutes per self guided tour

TOUR TIP: Limited wheelchair access. Food and drinks are available onsite. Toilets are available onsite.

ARCHITECT: Aspect Architects and project managers

WEBSITE: www.aspectapm.net

Buderim's Burnett Street blends historical charm with contemporary vibrancy, showcasing a mix of heritage and modern architecture amidst boutiques and eateries. Standing prominently along this bustling tree-lined thoroughfare is 52 Burnett Street, constructed in the early 1990s and laying unoccupied for a number of years.

Aspect Architects and Project Managers, with 30 years of regional presence, seized the opportunity to establish this building as a new base for their Sunshine Coast operations. Renovating existing structures poses challenges in compliance, planning, and design. With a modest budget and a commitment to preserving Burnett Street's heritage character, Aspect implemented strategic enhancements. These include a new street facing awning, locally sympathetic finishes, abundant greenery, and a refreshed facade, all aimed at seamlessly integrating with the streetscape's village ambiance. Adjacent to the heritage-listed Buderim Post Office, the revitalised 52 Burnett Street stands as a testament to thoughtful urban renewal. By melding modern functionality with historic context, the Aspect team has transformed a dormant space into a contemporary building that respects and positively enriches the built environment in its community surroundings.





9 RUSSELL HALL HOUSE, MONS

SATURDAY ONLY

ADDRESS. Address provided on booking

OPEN. Saturday 19 October, 1,2,3pm

TOURS. Pre-booked guided tours only

TOUR TIP. No wheelchair access

ARCHITECT. Russell Hall

BUILT. Built in 1982

WEBSITE. <https://qldarch.net/architect/summary?architectId=77>

The Hall House at Mons, c.1982, is a fine example of an architect's own home providing the opportunity for out-of-the-box thinking and experimentation.

In the design and construction of his own home, Russell Hall, adopted the attitude 'when in doubt, just do it'. This is most obvious in the use of upturned trees with the root ball still attached which became the internal posts for the home.

The trees were salvaged from a pile that was intended to be burnt, and their use here emphasises the magnificent sculptural qualities of these trees, which are often incinerated as waste!

The house features walls that do not meet the roof line and the shape and form of the house evolved to maximise views down the valley to the northwest.

The architect is Russell Hall, whose Carpenter Hall House, is listed for the Australian Institute of Architects' Nationally Significant Architecture.





10 ABC STUDIOS

SATURDAY ONLY

ADDRESS. Level 1, 15 Carnaby Street
Maroochydore

OPEN. Saturday 19 October, 8am to 11am
(no booking required)

TOURS. Self-guided access - 20 minutes per
tour

TOUR TIP. Wheelchair access

WEBSITE. abc.net.au/sunshine

ABC Sunshine Coast provides a voice for our diverse and dynamic region at a time when the presence of commercial media is shrinking.

Our local team bring you live and local programming daily, linking the stories, people and conversations of our coastal community through broadcast, online and mobile services.

Come along to our Open House and see how our news and programs are put together. Visitors will have the opportunity to meet staff and ask questions, as well as tour two state-of-the-art studios, one news booth and content gathering area. They might also find themselves on air...!





11 CITY HALL

SATURDAY ONLY

ADDRESS. 54 First Ave, Maroochydore

OPEN. Saturday 19 October

TOURS. Guided tours at 10am, 11am, 12pm, 1pm & 2pm. 30 mins (Bookings not required).

TOUR TIP. Meeting at Lightning Lane, Maroochydore

ARCHITECT. Cottee Parker Architects

BUILDER. McNab

BUILT. 2022

WEBSITE. www.architecture.com.au/archives/awards/sunshine-coast-city-hall-cottee-parker-architects-and-comuniti

Designed by Cottee Parker Architects with sustainability at its core design response, the new Sunshine Coast City Hall includes features that will reduce environmental impact and embrace the Sunshine Coast climate.

The building is intended to fit seamlessly into its built and natural environment and distinguishes itself as a landmark building in the new city centre.

The building is inspired by the forms and

colours of the unique Sunshine Coast Glass House Mountains. The mountain and water themes flow from the exterior inwards to deliver a holistic and integrated experiential journey for residents, visitors and staff. The design provides a clear view of council chambers located on level one, providing transparency to the community of governance in action.

The projects vision sought to address key characteristics including strong governance, healthy work environment, economic opportunities, sub-tropical design, community connectivity, iconic form, sustainability and value for money.

Setting the standard for workplace design in Maroochydore the design establishes a landmark building that represents the Council's commitment to design excellence, innovation and sustainability.

Inspired by indigenous philosophies of connection to Country, with an experiential journey of spaces inspired by its surrounding landscape. Referencing the passage of waterways and erosion of land masses, organic interior forms shape spaces and ground the design in the past whilst speaking to the evolving future.



12

UNITYWATER OPERATIONS CENTRE

SATURDAY ONLY

ADDRESS. 6-8 Maud St, Sunshine Coast
(some visitor parking on site)

OPEN. Saturday 19 October

TOURS. Pre-booked guided tours at 10am,
11am and 12:30pm. 30 mins.

BOOK. sunshinecoastopenhouse.com.au

COST. Free

NOTE. Note: In the event of an incident, tours
may need to be cancelled at short notice.

ARCHITECT. Sprout Architects

WEBSITE. For more information, visit
www.unitywater.com or follow us on
Facebook.



Running water and flushing toilets are such an important part of our everyday lives and it's really hard to imagine not having them. But what goes on behind the scenes to make sure that water can keep moving through our homes and businesses on the Sunshine Coast?

Come behind the scenes to the 24/7 Unitywater Operations Centre in Maroochydore, and see what we do, and how we do it to keep safe drinking water coming to your home, and manage the wastewater coming through your sinks, showers, and toilets.

Speak to the experts about our advanced technology including AI and predictive data, which guides us day to day on how our assets are performing and what needs attention.





13 WHEEL HOUSE BOATSHED

SATURDAY ONLY

ADDRESS. 165 Bradman Ave, Maroochydore

OPEN. Saturday 19 October, 11am – 1pm
(no booking required)

TOURS. Self-guided access - 10 minutes per self guided tour

TOUR TIP. No wheelchair access

BUILDER. Steve Maguire and Maroochydore Men's Shed

WEBSITE. <https://www.instagram.com/wheelhouseonbradman/>

This is one of five surviving boatsheds which were constructed here on the Maroochy River in the 1920s and 1930s. They are attached to short jetties and were built for fishing and storage and playing around with boats. They lined the river down to Cotton Tree, but by the 1970s most of the structures were derelict and removed. A Sunshine Coast Council heritage study in 2014 highlighted their importance for the community, and the group of five were listed for their local history and significance on the Sunshine Coast Planning Scheme 2014.

This small timber boatshed was substantially repaired in the 1960s and again in more recent times when the jetty collapsed, and the boatshed had been subject to vandal acts - including theft of timbers. The owners arranged with Maroochydore Men's Shed to undertake necessary repairs and conservation works, which were completed in 2023. The boatshed again contributes to the beauty and tranquillity of the river.





© David Chatfield

14

MAPLETON HOUSE

SATURDAY ONLY

ADDRESS. Address provided on booking
OPEN. Saturday 19th October 11, 11:45, 12:30m
TOURS. Pre-booked guided tours only
BOOK. sunshinecoastopenhouse.com.au
ARCHITECT. ATELIER CHEN HUNG
BUILT. Completed 2024
WEBSITE. www.a-ch.com.au/project/mapleton-house/



© David Chatfield



© David Chatfield

Sitting on the ridge-line of Blackall Range, Mapleton House embodies an intuitive response to the suburban-rural fringe condition. Strategically recessed twin buildings establish visual connections with the prominent natural features of Mt. Ninderry and Mt. Coolum, offering passersby views from the street and the adjacent public stairway.

Conceptualised as an inhabited terrain, the design emphasizes one's engagement with the existing topography. The house envelope, intentionally angled to align with sight-lines toward the mountains, coupled with a multi-stepped platform interior, choreographs a dynamic spatial experience.

The rugged monolithic structures emerge organically, engaging in a dialogue with the geological formations and the surrounding landscape.



15

KULANGOOR CEMETERY

SATURDAY ONLY

ADDRESS. 31-89 Ackerman Road, Kulangoor

OPEN. Saturday 19 October 10am – 2pm

TOURS. Self guided visit

TOUR TIP. Wheel chair access on internal roads

ARCHITECT. Built by William Andrew Grigor

BUILT. 1894 with an addition in 1970.
Heritage listed.

WEBSITE. [www.sunshinecoast.qld.gov.au/
living-and-community/community-facilities/
cemeteries/cemeteries-locality-guide](http://www.sunshinecoast.qld.gov.au/living-and-community/community-facilities/cemeteries/cemeteries-locality-guide)



Have you ever wondered what happens behind-the-scenes at a cemetery and how burials are planned?

If yes - then come on a tour to learn more.

Council's Kulangoor Memorial Sanctuary is one of the largest lawn cemeteries on the Sunshine Coast. Surrounded by rolling green hills and established trees, this cemetery embraces its environment with the chapel and reflection pool offering tranquil places for visitors. The chapel overlooks one of the areas for expansion identified in our Kulangoor Cemetery Masterplan that aims to maintain beautiful, green spaces. In the future, this cemetery will include pathways and boardwalks for visitors to sit, reflect and remember in a peaceful place.





16

KOONGALBA

SUNDAY ONLY

ADDRESS. 12 Wharf Street, Yandina

OPEN. Sunday 20 October 10am to 1pm

TOURS. Pre-booked tours on the hour at 10am, 11am, 12pm

BOOK. sunshinecoastopenhouse.com.au

TOUR TIP. No wheelchair access. Please remove shoes at entry. No public toilets.

ARCHITECT. Built by William Andrew Grigor

BUILT. 1894 with an addition in 1970. Heritage listed.

WEBSITE. apps.des.qld.gov.au/heritage-register/detail/?id=601613

Koongalba was built in 1894 by William Andrew Grigor for John and Louisa Low. John was a timber-getter and sourced the timbers locally floating them down the Maroochy River to William Pettigrew's Maroochydore Sawmill. The sawn timber was then returned by pontoon and brought to the site by bullock wagon. Fittings such as doors and windows were purchased from Pettigrew's Brisbane catalogue. Detailed records exist of the building of the house including Grigor's total payment of £23.4.8.

Of late 19th century style, the house has single skin walls with cross bracing; the roof was originally wooden shingles; four verandahs surrounded four central rooms with an open walkway to a separate kitchen and store room. Early photos show acroteria giving a pagoda-like effect.

Koongalba is built on part of Portion 4 selected by James Low in 1868. Large bunya pines, camphor laurels and mango trees, planted by the family, remain. John and Louisa Low had nine children, the youngest was David Low, MP for Cooroora and past chairman of Maroochy Shire Council. He was the third generation to serve in local government. In 1970 Jim and Audienne Blyth, a Low descendant, purchased the house and have endeavoured to preserve it.





17 PANDANUS HOUSE COOLUM

SATURDAY ONLY

ADDRESS. Address provided on booking**OPEN.** Saturday 19 October 12pm-3pm**TOURS.** Prebooked guided tours 12, 1, 2 and 3pm**BOOK.** sunshinecoastopenhouse.com.au**TOUR TIP.** No wheelchair access**ARCHITECT.** Craig Channon

Pandanus House was originally a two bedroom holiday cottage that was built in the 70s. It was my first home for myself and my daughter. Evan and I became a family in 2003 and Evan had two children so we were suddenly a family of five living in a two bedroom cottage. A decision was made to renovate and extend. We created an internal courtyard and added a building which doubled the size of the original house. The extension contained 2 bedrooms a share bathroom and an office.

The new building was designed by the Architect Craig Channon and the details of joinery and cabinetry were created by Evan Goldsmith and Dorothy Hookway. We then totally re-designed the interior and openings of the existing cottage. The joinery and cabinetry were designed to complement the extension. The details and finishes are reflected in both buildings. The intention was to create flexible and playful spaces for a growing family on a minimal budget. We felt it was an important feature to retain a connection between the native garden and the interior through the use of large openings and the courtyard.





18 SALT AIR MODULAR HOMES

SATURDAY & SUNDAY

ADDRESS. 41 Quanda Road, Coolool

OPEN. Saturday 19 October 9am-12pm and
Sunday 20 October 9am-12pm

TOURS. Self-guided tours, plus one guided
tour each day at 10am - Bookings not
required

WEBSITE. saltairmodular.com.au

*Recently awarded HIA Queensland Modular
and Prefabricated Housing Award*



Saltair Modular invites you on a full factory tour of its modular building facility. Enjoy seeing a number of buildings in various stages of construction, through to completed displays.

Saltair Modular is Queensland's most awarded modular builder. From contemporary hinterland residences to modern urban homes, Saltair has won the HIA's 'Innovation in Housing' Award

on the Sunshine Coast for the last seven years in a row. Modular home construction has been around for decades and is a prominent form of house construction in Northern Europe and Northern America. However, it is not well understood in Australia, where it only makes up less than 5% of residential builds.

Saltair Modular welcomes the opportunity to open its doors to Sunshine Coast Open House visitors and provide tours of its new home manufacturing facility in Coolool.

Visitors will be able to 'experience' the many stages of building construction, from floor bases through to completed homes. Saltair Modular's motto is 'redefining the way you build'. Their in-house team of architects and building designers are capable of standard or custom designs from scratch, and also regularly work with a client's architect to efficiently modularise their designs.

Through factory-controlled, quality management, modular building is able to substantially reduce construction times and material wastage. Combined with a light footprint and less than 20% of works occurring on site, the whole modular process offers a highly sustainable solution to many of the current challenges facing the building and development environment.

Saltair Modular looks forward to welcoming visitors for factory tours and viewing display homes.



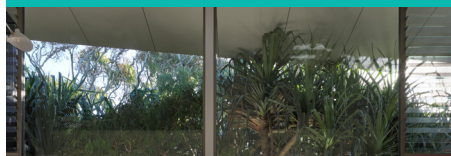
Photography by Christopher Frederick Jones

19 TRISTANIA HOUSE

SUNDAY ONLY

ADDRESS. Marcus Beach**OPEN.** Sunday 20 October 1pm – 4pm

(Pre-booking required)

TOURS. Pre-booked guided tours at 1.00pm, 1.45pm, 2.30pm and 3.15pm**BOOK.** sunshinecoastopenhouse.com.au**TOUR TIP.** No wheelchair access**ARCHITECT.** Bark Architects**CONSTRUCTION.** GTO Building**LANDSCAPE.** Spaces of Green**WEBSITE.** <https://www.barkdesign.com.au>

Photography by Christopher Frederick Jones

“Tristania” is a place that welcomes and embraces memorable family holidays in its natural coastal environment. It provides connectedness between spaces and people in the spirit of ‘the shack’ that was relocated from the site. Landscape is celebrated, with both double height and cosy spaces for living, which are porous and permeable from the plunge pool on the north east to the fire pit on the west. Careful siting preserves and celebrates the magnificence of the sculptural Moreton Bay Ash trees, Pandanus and Banksias.

The light filtering ‘breezeway’ entry and circulation space sets the tone and character and connects the modern, timeless, sustainable and climatically responsive series of spaces for indoor / outdoor living. The graphic shadows and sunlight tracking through the space register time and season, whilst moonlight through the house is magic.

Two ‘wings’, one for living and the other for sleeping, allow individual zones to open on to the central breezeway space, where the character of an easy coastal lifestyle is amplified. It is a breathable house to suit our benign subtropical climate and it celebrates an inextricable link to its coastal landscape.



20

MATSO'S SUNSHINE COAST

SUNDAY ONLY

ADDRESS. 85 Memorial Dr, Eumundi

OPEN. Sunday 20 October - Matsos is open all day for food and drinks, from 10am, drop in as you drive around!

TOURS. Pre-booked guided tours at 9am, 9:45am and 10:30am

BOOK. sunshinecoastopenhouse.com.au

TOUR TIP. Limited wheelchair access

ARCHITECT. Five Mile Radius in collaboration with Knight Wilson Architects

WEBSITE. www.fivemileradius.org/blogs/design/matsos-eumundi

www.matsos.com.au/sunshinecoast/

Matso's Eumundi is a 1000sqm adaptive reuse hospitality project with architecture, interiors, and furniture designed by Five Mile Radius in collaboration with Knight Wilson Architects and built by Hutchinson Builders.

In late 2021, Five Mile Radius were approached by Matso's to design their new Queensland outpost. The Western Australian brewery, famous for their mango and ginger beers, has opened a new home at the legendary Joe's Waterhole. The project involved the restoration of the 1920s timber and tin pub, as well as the demolition of various water-damaged additions to make way for a new brewery, bistro, and landscape to the rear of the pub. The new addition consists of four gable-roofed pavilions which echo the proportions of the heritage-listed pub and provide a legible and adaptable 'shed' for future generations.

The design aims to regenerate the extensive garden to the rear of the site and to connect the garden to the street. A full survey of salvageable demolition material was undertaken, with many aspects of the new works built from these recycled materials

The Five Mile Radius workshop reworked much of the original pub furniture, resulting in a nearly entirely recycled and Australian hardwood-based furnishing for the new venue. The project was completed in late 2023





21 THE BARN AT EERWAH VALE

SUNDAY ONLY

ADDRESS. 1 Musavale Rd, Eerwah Vale

OPEN. Sunday 20 October 1pm-4pm
(no bookings required)

TOURS. Self-guided access - 10 minutes per
self guided tour

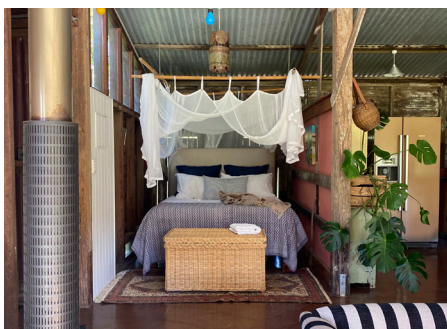
TOUR TIP. No wheelchair access.

ARCHITECT. Lovingly restored by Andrew
Hillhouse Architecture

BUILT. 1910

WEBSITE. www.hillhousearchitecture.com

INSTAGRAM. @andrewhillhouseart



The Barn at Hill House is the result of a labour of love and an appreciation of 114 year- old farming architecture and a celebration of dairy farming in the Eerwah Valley. The restored old dairy combines basic rustic charm with contemporary style and comfort in a rural setting with views to the rolling hills and nearby Mount Eerwah and Mount Cooroy. The buildings have been in the family for over 25 years. Earwah Vale is famous for dairy farming with the Butter factory in Eumundi and the train line linking to Brisbane.

Loved and restored by Architect and artist Andrew Hillhouse and his wonderful wife Sarah who cherishes the heritage details of the family cow shed.





Photography by Yaseera Moosa

22

COOROY HOUSE

SUNDAY ONLY

ADDRESS. Address provided on booking**OPEN.** Sunday 20 October**TOURS.** Pre-booked guided tours 1, 2, 3 pm**BOOK.** sunshinecoastopenhouse.com.au**TOUR TIP.** No wheelchair access**ARCHITECTS.** Henry Bennett & Dan Wilson**BUILT.** New residence 2023**WEBSITE.** henrybennett.com.audanwilson.com.au

Photography by Yaseera Moosa



Photography by Yaseera Moosa

The Cooroy House is a modest, off-grid home, immersed within its landscape. Taking cues from the surrounding timber & tin cottages of the area, the lightweight, single-storey structure is simple and cost-effective. Raised above the ground on a single platform, it imposes minimal disruption to the sensitive site. The house is composed of a series of pavilions & courtyard gardens stitched together by a linear verandah spine. This external space acts as the main circulation route, providing its occupants with a constant connection to the landscape. The main courtyard is framed by the building on one side, and the sloping hillside on the other, offering a protected retreat embedded within the expansive site. The building is positioned along the contours of the hill and oriented to the north-east to capture warming winter sun into the L-shaped plan. Operable screens and planting provide protection from the harsher summer weather.



23 MOON MOUNTAIN SANCTUARY

SUNDAY ONLY

ADDRESS. Address provided on booking**OPEN.** Sunday 20 October 1pm - 4pm

(Pre-bookings required)

TOURS. Pre-booked guided tours at 1pm, 2pm, 3pm. 30 mins - 15 people per tour**BOOK.** sunshinecoastopenhouse.com.au**TOUR TIP.** Limited wheelchair access. No public toilets available.**ARCHITECT.** Peter Ireland from AJC**BUILT.** 2017**WEBSITE.** architectsajc.com/eumundi-house

“Cohabitation with the horses was a driving force in us building a new home here. The herd congregates regularly at the verandah waiting for us; it’s one of our greatest joys.”

On a farm in the Noosa hinterland, AJC has designed a series of outbuildings that are both modest in scale and ethically ambitious. Three new structures – a house, a garage and a horse pavilion – dispense with fences and play with rural vernaculars, to forge a close connection between the clients and a herd of brumbies that roam their 30-hectare property.

Eumundi House reflects a different approach to rural life. The design maintains an original farmstead and adds two outbuildings: a modest home of one bedroom plus study, and a detached garage. Together with the farmstead, they define the property’s domesticated zone without the fences or barricades typical to rural estates. Downhill to the west, a horse pavilion is added beside a large, unfenced paddock, where the owner works with the horses.

The lack of fences between house and outbuildings supports the clients’ greater landscape projects of habitat regeneration to encourage diversity, and free movement of wildlife and the horses across the property. Their vision is not a wilderness as such, but a place for wildness.

New structures reference Australian rural vernaculars in form and materials of corrugated steel and timber. The new house is carved around the site, responding to the landscape, culminating in a high roof gable to the north, framing a view of Mt Cooroy - a significant natural feature of the region. It evolved from a simple shed form of gable roof over orthogonal plan, with the gable roof extending above the living room and north deck. The detached garage is a simpler form, a mediating fragment between the house and original farmstead.



24

PAN POTTERY STUDIO

SUNDAY ONLY

ADDRESS. 251 Eumarella Road, Weyba Downs

OPEN. Sunday 20 October 10am - 3pm (no bookings required)

TOURS. Self-guided access - 10 minutes per self guided tour

TOUR TIP. No wheelchair access.

DESIGNER. Angus McDiarmid

BUILT. 2014

WEBSITE. www.panpottery.com



The beautiful, light filled Pan Pottery Studio was established in 2014. Ceramist Angus McDiarmid makes all his pots using a traditional wood fire kiln, kick wheel and he digs the local clay himself. Even the timber he used to build his serene studio is hand milled from local timber.

Angus is an architecture enthusiast. Perhaps he was influenced by his Architect uncle, Gabriel Poole?

This studio is worth a visit for anyone who is interested in joinery and connecting to the earth.





Photography by Christopher Frederick Jones

25 BARK ART ROOM

SUNDAY ONLY

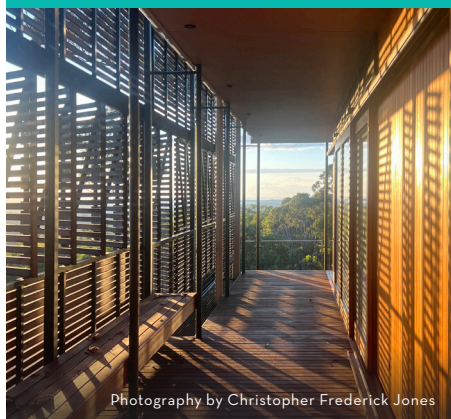
ADDRESS. 413 Sunrise Road, Tinbeerwah**OPEN.** Sunday 20 October 9am - 12pm (Pre-bookings required)**TOURS.** Pre-booked guided tours at 9.00am, 9.45am, 10.30am and 11.15am. 20 mins - 20 people per tour**BOOK.** sunshinecoastopenhouse.com.au**TOUR TIP.** No wheelchair access. Remove shoes on entry. No public toilets available**ARCHITECT.** Bark Architects**WEBSITE.** <https://www.barkdesign.com.au>

Elevated as a modernist pavilion in the Noosa hinterland, the Studio is a modular structure of portal frames wrapped with glass on three sides and a plywood 'billboard' facing the road.

Twenty years on, the Art Room is a timber companion building, next to the award winning Studio. The name comes from its previous life as an art classroom for a high school at Toowoomba. As a 1970's prefabricated school building, it has been relocated and transformed with plywood lining and Blackbutt doors and cladding. The veranda and 'port racks' have been replaced with 1.3km of recycled hardwood battens as an operable screen, providing privacy and vistas, whilst celebrating the play of light and shadow.

The Art Room has inherent flexibility and adaptability to be configured as an event or meeting space, a work space, guest quarters or a small house.

Eye catching and memorable, this pair of buildings perches carefully on the hillside and generously frames a 'public' view of the Noosa coastline.



Photography by Christopher Frederick Jones



26

KIJJI

SUNDAY ONLY

ADDRESS. Address provided on booking

OPEN. Sunday 20 October 10am - 2pm

(Pre-bookings required)

TOURS. Pre-booked tours at 10am, 11am, 12pm, 1pm. 30 mins - 15-20 people per tour

BOOK. sunshinecoastopenhouse.com.au

TOUR TIP. No wheelchair access. No public toilets available

DESIGNER. Sam Cunningham

BUILT. 2014-2017 by Jim Evans



Kijiji is an ecologically focused house complex comprising a natural sustainable house, central permaculture garden, tennis court and low chemical swimming pool. Rather than conforming to modern building themes, Kijiji does its best to disrupt these in an effort to inspire people to move away from modern toxic building practices and instead live more

consciously and in much closer harmony with nature.

Kijiji is designed around the following principles:

- toxin free construction and optimally healthy household
- environmental and ecological sustainability, primarily off grid, toxin free, circular system low waste living (energy production, water storage, food production)
- traditional building styles, materials and building functionality to optimise longevity and minimise footprint
- seamless outdoor /indoor living with optimally close connection to nature

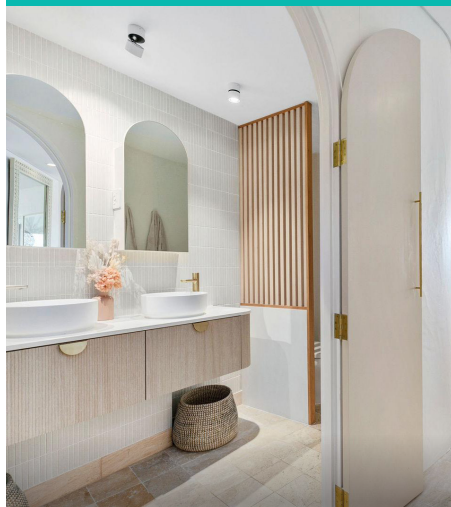
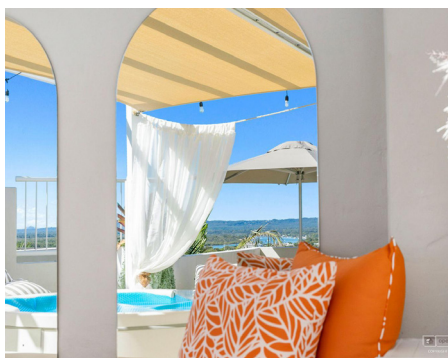
Kijiji was designed in a collaborative effort between the owner, builder Jim Evans and designer Sam Cunningham. Inspired by two Guildford Bell houses built in the 1960s, Kijiji is a U shaped, courtyard style house that is simple and unassuming. It has a large, open barn like interior with high natural timber beam ceilings and large communal and interconnected spaces for gathering and relationship.

Kijiji celebrates and embraces the natural chaos of family life, food growing and nature and encourages people to consider what is most important in a home and a building - its soul, its impact on our health and well-being, and its purpose.



27 NOOSA BLUE APARTMENT

SUNDAY ONLY

ADDRESS. Address provided on booking**OPEN.** Sunday 20 October**TOURS.** Prebooked guided tours 2:30pm, 3pm, 3:30pm, 4pm, 4:30pm**BOOK.** sunshinecoastopenhouse.com.au**TOUR TIP.** Wheelchair access.**ARCHITECT.** Noel Robinson**WEBSITE.** noosablue.com.au

In 2021, we saw the potential in this charming, dated apartment to create a refined and sophisticated bohemian-style residence. Situated close to Noosa with expansive views that stretch from Pomona to Buderim, our rooftop offers breathtaking sunsets that never fail to captivate.

Located within walking distance of Noosa's main beach, Noosa Junction, and the National Park, this position is undeniably one of the best in the area. We've transformed this smaller villa with dedication, crafting a comfortable and luxurious living space.

Today, it stands as an awe-inspiring tranquil masterpiece, perfectly capturing stunning views, prime location.



28

WALLUMBURN HOUSE AND GARDEN

SUNDAY ONLY

ADDRESS. 376 Lake Road, Cooroibah

OPEN. Sunday 20 October 2.30pm-4.30pm

TOURS. Pre-booked guided tours at 2.30pm, 3pm, 3.30pm, 4pm, 4.30pm

BOOK. sunshinecoastopenhouse.com.au

TOUR TIP. No wheelchair access

ARCHITECTS. Greg King, K Architecture

LANDSCAPE ARCHITECT. Coco-Dash

BUILDER. Anderson Shaw

WEBSITE. www.karchitecture.com.au/
coco-dash.com.au

As you enter Wallumburn you are greeted by a seemingly humble tin shed vernacular house nestled within semi-open eucalypt scrub. There are eerie reminders of the recent bushfire which nearly engulfed the property only a few years ago, with some burnt out gums standing like charred sentinels to welcome guests and tell a story of resilience in the bush setting.

The House

The house itself is a beautifully simple corrugated steel building which had undergone extensive internal renovations but maintained a humble exterior standing somewhat naked within the landscape.

The owners had grand visions for multiple additions including a large covered entertaining deck, swimming pool with retractable shade roof, outdoor bathroom, carport, front verandah, drying deck, screening, tanks, and an elaborate vision of a formed creek bed / rainwater overflow running the length of the house entwined under and around all the mentioned parts to connect with the nearby dam. There one can also find an elaborately made pontoon, complete with galvanised steel beams and bespoke red concrete!

The Garden

The garden could be described as whimsical, functional and raw. It includes an unassuming reinforced turf driveway that provides rain permeable vehicular access to the carport and sheds and a landscape connection between the house and dam.

A reclaimed timber split-bridge allows vehicle access over the constructed rain harvesting creek-bed, central to the overall scheme. A raw material palette of insitu coloured concrete, natural stone paving, reclaimed and charred timber elements and hardy native and endemic plantings help to ground the garden and the architecture in the landscape while blurring the boundaries between bush and garden.



29 THE MAJESTIC THEATRE

SATURDAY ONLY

ADDRESS. 3 Factory Street, Pomona

OPEN. Saturday 19 October 9am – 4pm
(no booking required)

TOURS. Self-guided access to Main Hall, Stage, foyer and dining room, rear garden and viewing platform for rare theatre organ. Volunteers on hand to provide information.

TOUR TIP. Wheelchair access. Food and drinks are available onsite. Toilets are available onsite. Film memorabilia on display including working reel to reel. FREE Silent Movie screening at 12pm with live organ accompaniment

ARCHITECT. Unknown

The Majestic Theatre is one of the few pre-World War II picture theatres remaining in Queensland that have not been demolished or adapted to other uses. It is also Australia's longest continuously operating picture theatre and the world's longest continuously operating silent film theatre.

The Majestic Theatre was originally built as a social hall with attached shops in 1921. Despite the building being extensively restored and refurbished in 2006, the timber and fibrous

cement sheeted building is still a rare, and functional, example of a pre-World War II country hall that was converted into a picture theatre.

The hall was designed to serve several functions: to show silent movies, for vaudeville productions, and to act as a social centre for the town. Over time it served as a venue for dances, balls, concerts, and wedding functions, roller skating, boxing, and church services. Constructed of unseasoned milled hardwood, the hall was about 12 metres wide by 18 metres long, with seating for 198 people. It included a sprung dance floor of inch crow's ash timber, still extant today, and was raised on stumps to avoid flooding. In the mid 1920s a supper room was added to the long southeast elevation of the hall, and this section was later extended to the northeast.

The enduring appeal of the theatre building lies in its unique and traditional furnishings and fixtures. The Majestic Theatre is home to a 1937 Compton Organ which has recently enjoyed a six-year restoration. The organ, one of only four organs of its kind in the country, features over 750 bellowing pipes.



© Kimberly Williams

30

ALFREDSON'S JOINERY

SUNDAY ONLY

ADDRESS. 28 King Street, Cooran

OPEN. Sunday 20 October 11am - 4pm

TOURS. Pre-booked guided tours only at:
11am and 1pm. 30 mins - 20 people per tour

BOOK. sunshinecoastopenhouse.com.au

TOUR TIP. Limited wheelchair access.

Enclosed walking shoes to be worn. Food and drinks are available onsite. Toilets are available onsite.

ARCHITECT. Unknown

BUILT. Commenced in 1934

WEBSITE. apps.des.qld.gov.au/heritage-register/detail/?id=602690



The railway arrived at Cooran from Gympie in June 1889, which helped the district to develop

as an agricultural and timber centre. Shops were built along King Street opposite the railway line.

Alfredson's joinery, pre-cut house fabrication workshop and sawmill (former), was built and expanded between 1933 and the 1950s. It produced at least 1,200 pre-cut houses by the mid-1960s.

The building is 65 metres long and 13 metres wide over three levels - the former joinery workshop at street level, the former pre-cut house fabrication workshop to the middle and the sawmilling area at the lower level.

The pre-cut house business ceased in the mid 1980s and subsequent owners sold off most of the equipment. The first floor fronting King St has been used for a variety of businesses and is now Noosa Hinterland Brewing Company.

Since 1990 Al Guymer's use of the building for his joinery workshop, and as a base for his building and demolition work, is a fortunate coincidence which maintains a similar use and aesthetic which complements the historic use of the building.

Guymer's large collection of historic woodworking tools and general construction equipment adds another layer of significance.



QUEENSLAND TIMBER FLOORING

a r t i s a n s o f s t y l e

103 MAUD ST, MAROOCHYDORE  07 5475 4110
QUEENSLANDTIMBERFLOORING.COM

Queensland Timber Flooring provides and installs top-quality Australian hardwoods, imported species, and engineered flooring. With over 25 years of experience, our skilled tradesmen deliver exceptional craftsmanship for all designs and budgets. We also offer expert sanding and polishing services to rejuvenate your floors. For all your timber flooring needs, we've got you covered.



Cool Homes for the Sunshine Coast

Buy, build or renovate to suit
the Sunshine Coast climate



Access your
free booklet
here



Access your
smart phone
compass here

JOINT-PATRONS

Her Excellency the Honourable Dr Jeannette Young AC PSM, Governor of Queensland and Professor Graeme Nimmo RFD

AMBASSADOR

Dr Noel Robinson, OAM, LFRAIA

SUNSHINE COAST OPEN HOUSE COMMITTEE

Ian Dimond, Architect (Chair)

Lindsay Clare, Architect

Magdy Youssef, MPiA Fellow, Urban Design and Town Planning (Treasurer)

Ron Scott, Community Representative

Laurie Jones, Heritage Architect

Gina Scheer, Heritage Archaeologist (Secretary and Project Support)

Paul William-Smith

Tom O'Shea, Architect

PASSIONATE BEHIND-THE-SCENES HARD WORKERS

Evelyn Murphy, Sunshine Coast Council

Sarah Chalkley, Sunshine Coast Council

Cheryl Nash - Project Officer and Passionate resident

Jane Harding, Noosa Council

Steph Keays, Noosa Council

OPEN HOUSE WORLDWIDE

Open House has become an annual event which raises awareness of the value of good design in cities internationally. Sunshine Coast Open House is pleased to be part of the Open House Worldwide family.

OPEN HOUSE QUEENSLAND

Brisbane Open House

13-14 July 2024

brisbaneopenhouse.com.au

Gold Coast Open House

12-13 October 2024

goldcoastopenhouse.com.au

SPECIAL THANKS

The Sunshine Coast Open House team sincerely thanks all participating building owners, managers and representatives. Your support, energy and enthusiasm is greatly appreciated!

Heartfelt thanks to our many generous partners, sponsors, collaborators and volunteers who shared their love of the coast and helped make Sunshine Coast Open House possible.

The founding partners of SCOH are the Sunshine Coast Council, Noosa Council and the Australian Institute of Architects Qld Chapter.

Sunshine Coast Open House is proudly funded/supported through the Queensland Government's Showcasing Queensland Heritage grant program.

FREE EVENT

Unlock the doors to some of the Sunshine Coast's most inspiring buildings on Saturday 19 and Sunday 20 October 2024.

Sunshine Coast Open House is a free community event which provides visitors with the rare opportunity to tour architecturally diverse, historic and sustainable buildings across the region.

Enjoy meeting the people who design, build and preserve these buildings and celebrate the region's unique history, architecture and built form.

Sunshine Coast Open House is part of the Open House Worldwide network, founded in London in 1992 and now in 55 cities around the world.

KEY DATES

Building and House bookings open on
Wednesday 2 October at 11am

Bookings for all events and Walking Tours will open
on **Wednesday 4 September at 11am**

sunshinecoastopenhouse.com.au